



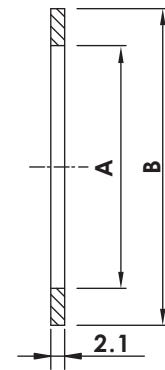
Vacuum **Fittings Catalogue**

# CF Flanges & Fittings

CF

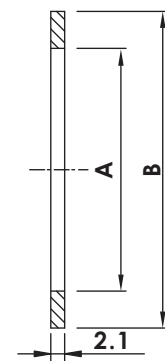
## OFHC COPPER SEALS

Catalogue PN	Flange Size	A	B
CF-CS-133	CF1.33"/CF16	16.20	21.25
CF-CS-212	CF2.12"/CF25	25.65	32.77
CF-CS-275	CF2.75"/CF35	36.80	48.10
CF-CS-275-1	CF2.75"/CF40	39.00	48.10
CF-CS-338	CF3.38"/CF50	51.05	61.60
CF-CS-450	CF4.50"/CF63	63.60	82.35
CF-CS-462	CF4.62"/CF80	76.45	91.39
CF-CS-600	CF6.00"/CF100	101.80	120.45
CF-CS-675	CF6.75"/CF130	127.25	141.40
CF-CS-800	CF8.00"/CF160	152.60	171.25
CF-CS-1000	CF10.00"/CF200	203.40	222.05
CF-CS-1200	CF12.00"/CF250	254.20	272.85
CF-CS-1325	CF13.25"/CF270	274.00	294.34
CF-CS-1400	CF14.00"/CF300	300.00	313.00
CF-CS-1650	CF16.50"/CF350	356.50	376.60

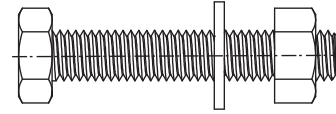


## OFHC COPPER SEALS

Catalogue PN	Flange Size	A	B
CF-CS-133-S	CF1.33"/CF16	16.20	21.25
CF-CS-212-S	CF2.12"/CF25	25.65	32.77
CF-CS-275-S	CF2.75"/CF35	36.80	48.10
CF-CS-275-1-S	CF2.75"/CF40	39.00	48.10
CF-CS-338-S	CF3.38"/CF50	51.05	61.60
CF-CS-450-S	CF4.50"/CF63	63.60	82.35
CF-CS-462-S	CF4.62"/CF80	76.45	91.39
CF-CS-600-S	CF6.00"/CF100	101.80	120.45
CF-CS-675-S	CF6.75"/CF130	127.25	141.40
CF-CS-800-S	CF8.00"/CF160	152.60	171.25
CF-CS-1000-S	CF10.00"/CF200	203.40	222.05
CF-CS-1200-S	CF12.00"/CF250	254.20	272.85
CF-CS-1325-S	CF13.25"/CF270	274.00	294.34
CF-CS-1400-S	CF14.00"/CF300	300.00	313.00
CF-CS-1650-S	CF16.50"/CF350	356.50	376.60



# CF Flanges & Fittings

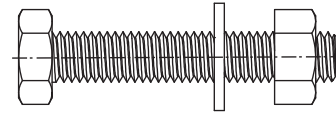


## HEX HEAD BOLTS - METRIC THREAD

Catalogue PN	Flange Size	Thread	No. of Sets
CF-HB-133M	CF1.33"	M4xP0.70	25
CF-HB-212M	CF2.12"	M6xP1.00	25
CF-HB-275M	CF2.75"	M6xP1.00	25
CF-HB-338M	CF3.38"	M8xP1.25	25
CF-HB-450M	CF4.50"	M8xP1.25	25
CF-HB-600M	CF6.00"	M8xP1.25	25
CF-HB-800M	CF8.00"	M8xP1.25	25
CF-HB-1000M	CF10.0"	M8xP1.25	25

**CF**

## HEX HEAD BOLTS - INCH THREAD



Catalogue PN	Flange Size	Thread	No. of Sets
CF-HB-133	CF1.33"	8-32 UNC	25
CF-HB-212	CF2.12"	1/4"-28UNF	25
CF-HB-275	CF2.75"	1/4"-28UNF	25
CF-HB-338	CF3.38"	5/16"-24UNF	25
CF-HB-450	CF4.50"	5/16"-24UNF	25
CF-HB-600	CF6.00"	5/16"-24UNF	25
CF-HB-800	CF8.00"	5/16"-24UNF	25
CF-HB-1000	CF10.0"	5/16"24UNF	25

# CF Flanges & Fittings

## PLATE NUTS - METRIC THREAD



**CF**

Catalogue PN	Flange Size	Diagram	A	B	C	D	E	ØF
CF-PN-133M	CF1.33"	A	20.30	7.62	13.46	3.20	5.35	M4xP0.7
CF-PN-275M	CF2.75"	A	41.16	12.70	29.46	5.10	6.10	M6xP1.0
CF-PN-338M	CF3.38"	B	44.45	12.70	27.69	5.30	-	M8xP1.25
CF-PN-450M	CF4.50"	B	51.56	12.70	35.30	5.30	-	M8xP1.25
CF-PN-462M	CF4.62"	B	45.80	12.70	31.60	5.30	-	M8xP1.25
CF-PN-600M	CF6.00"	B	41.65	12.70	25.40	5.30	-	M8xP1.25
CF-PN-800M	CF8.00"	B	44.45	12.70	28.45	5.30	-	M8xP1.25
CF-PN-1000M	CF10.00"	B	44.45	12.70	30.23	5.30	-	M8xP1.25

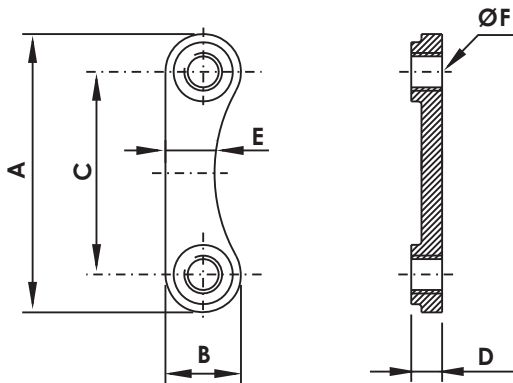


Diagram A

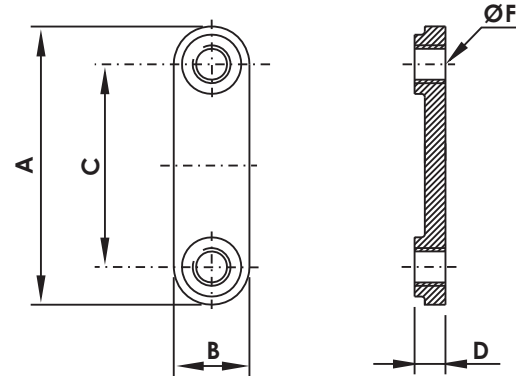


Diagram B

# CF Flanges & Fittings

## PLATE NUTS - INCH THREAD



Catalogue PN	Flange Size	Diagram	A	B	C	D	E	ØF
CF-PN-133	CF1.33"	A	20.30	7.62	13.46	3.20	5.35	#8-32
CF-PN-275	CF2.75"	A	42.16	12.70	29.46	5.10	6.10	1/4-28
CF-PN-338	CF3.38"	B	44.45	12.70	27.69	5.30	-	5/16-24
CF-PN-450	CF4.50"	B	51.56	12.70	35.30	5.30	-	5/16-24
CF-PN-462	CF4.62"	B	45.80	12.70	31.60	5.30	-	5/16-24
CF-PN-600	CF6.00"	B	41.65	12.70	25.40	5.30	-	5/16-24
CF-PN-800	CF8.00"	B	44.45	12.70	28.45	5.30	-	5/16-24
CF-PN-1000	CF10.00"	B	44.45	12.70	30.23	5.30	-	5/16-24

CF

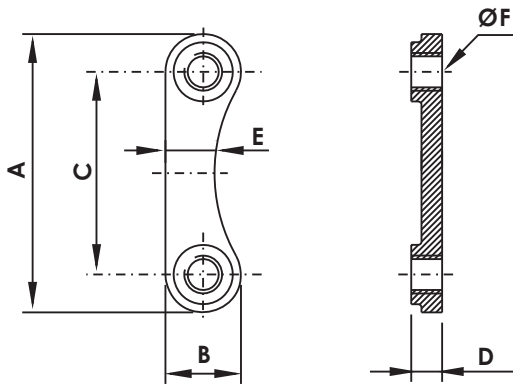


Diagram A

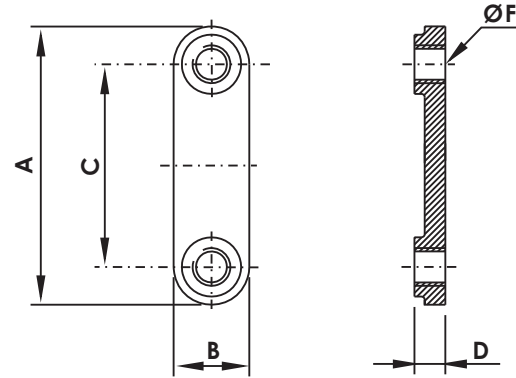


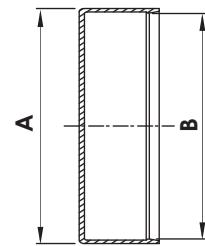
Diagram B

# CF Flanges & Fittings



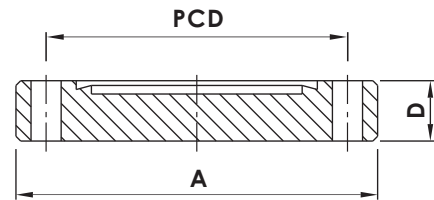
## CF FLANGE PLASTIC CAP

Catalogue PN	Flange Size	A	B
CF-PC-133	CF1.33"	36.20	34.20
CF-PC-212	CF2.12"	56.40	54.00
CF-PC-275	CF2.75"	72.10	70.10
CF-PC-338	CF3.38"	88.50	85.90
CF-PC-450	CF4.50"	118.30	113.50
CF-PC-462	CF4.62"	120.50	117.60
CF-PC-600	CF6.00"	156.40	151.60
CF-PC-675	CF6.75"	173.80	171.60
CF-PC-800	CF8.00"	206.00	202.00
CF-PC-1000	CF10.0"	258.00	254.00
CF-PC-1200	CF12.0"	309.00	304.60
CF-PC-1325	CF13.25"	341.10	336.70
CF-PC-1400	CF14.0"	360.10	355.70



**CF**

# CF Flanges & Fittings

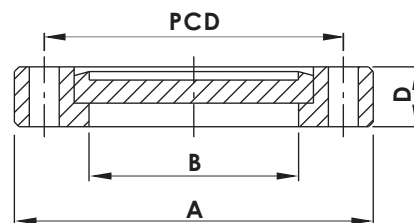


## CF BLANKER

Catalogue PN	Type	Flange Size	A (mm)	D (mm)	PCD (mm)	Bolt Holes	Diameter/Thread (mm)
CF-BL-133	Thru Holes	CF1.33"/CF16	33.70	7.60	26.97	6	4.37
CF-BL-133T	Tapped	CF1.33"/CF16	33.70	7.60	26.97	6	8-32
CF-BL-133TM	Tapped(M)	CF1.33"/CF16	33.70	7.60	26.97	6	M4
CF-BL-212	Thru Holes	CF2.12"/CF25	53.80	11.90	41.28	4	6.73
CF-BL-212T	Tapped	CF2.12"/CF25	53.80	11.90	41.28	4	1/4-28
CF-BL-212TM	Tapped(M)	CF2.12"/CF25	53.80	11.90	41.28	4	M6
CF-BL-275	Thru Holes	CF2.75"/CF35	69.30	12.70	58.72	6	6.73
CF-BL-275T	Tapped	CF2.75"/CF35	69.30	12.70	58.72	6	1/4-28
CF-BL-275TM	Tapped(M)	CF2.75"/CF35	69.30	12.70	58.72	6	M6
CF-BL-338	Thru Holes	CF3.38"/CF50	85.30	16.00	72.39	8	8.43
CF-BL-338T	Tapped	CF3.38"/CF50	85.30	16.00	72.39	8	5/16-24
CF-BL-338TM	Tapped(M)	CF3.38"/CF50	85.30	16.00	72.39	8	M8
CF-BL-450	Thru Holes	CF4.50"/CF63	113.50	17.30	92.15	8	8.43
CF-BL-450T	Tapped	CF4.50"/CF63	113.50	17.30	92.15	8	5/16-24
CF-BL-450TM	Tapped(M)	CF4.50"/CF63	113.50	17.30	92.15	8	M8
CF-BL-462	Thru Holes	CF4.62"/CF80	117.00	19.10	102.36	10	8.43
CF-BL-462T	Tapped	CF4.62"/CF80	117.00	19.10	102.36	10	5/16-24
CF-BL-462TM	Tapped(M)	CF4.62"/CF80	117.00	19.10	102.36	10	M8
CF-BL-600	Thru Holes	CF6.00"/CF100	151.60	19.80	130.25	16	8.43
CF-BL-600T	Tapped	CF6.00"/CF100	151.60	19.80	130.25	16	5/16-24
CF-BL-600TM	Tapped(M)	CF6.00"/CF100	151.60	19.80	130.25	16	M8
CF-BL-675	Thru Holes	CF6.75"/CF130	170.69	21.30	151.61	18	8.43
CF-BL-675T	Tapped	CF6.75"/CF130	170.69	21.30	151.61	18	5/16-24
CF-BL-675TM	Tapped(M)	CF6.75"/CF130	170.69	21.30	151.61	18	M8
CF-BL-800	Thru Holes	CF8.00"/CF160	202.44	22.35	181.05	20	8.43
CF-BL-800T	Tapped	CF8.00"/CF160	202.44	22.35	181.05	20	5/16-24
CF-BL-800TM	Tapped(M)	CF8.00"/CF160	202.44	22.35	181.05	20	M8
CF-BL-1000	Thru Holes	CF10.00"/CF200	253.24	24.60	231.85	24	8.43
CF-BL-1000T	Tapped	CF10.00"/CF200	253.24	24.60	231.85	24	5/16-24
CF-BL-1000TM	Tapped(M)	CF10.00"/CF200	253.24	24.60	231.85	24	M8
CF-BL-1200	Thru Holes	CF12.00"/CF250	304.40	25.90	283.97	32	8.43
CF-BL-1200T	Tapped	CF12.00"/CF250	304.40	25.90	283.97	32	5/16-24
CF-BL-1200TM	Tapped(M)	CF12.00"/CF250	304.40	25.90	283.97	32	M8
CF-BL-1325	Thru Holes	CF13.25"/CF270	335.79	28.45	306.32	30	10.49
CF-BL-1325T	Tapped	CF13.25"/CF270	335.79	28.45	306.32	30	3/8-24
CF-BL-1325TM	Tapped(M)	CF13.25"/CF270	335.79	28.45	306.32	30	M10
CF-BL-1400	Thru Holes	CF14.00"/CF300	354.84	28.45	325.37	30	10.49
CF-BL-1400T	Tapped	CF14.00"/CF300	354.84	28.45	325.37	30	3/8-24
CF-BL-1400TM	Tapped(M)	CF14.00"/CF300	354.84	28.45	325.37	30	M10
CF-BL-1650	Thru Holes	CF16.50"/CF350	418.34	28.45	388.87	36	10.49
CF-BL-1650T	Tapped	CF16.50"/CF350	418.34	28.45	388.87	36	3/8-24
CF-BL-1650TM	Tapped(M)	CF16.50"/CF350	418.34	28.45	388.87	36	M10

**CF**

# CF Flanges & Fittings



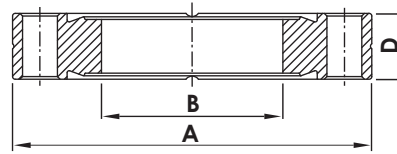
## CF BLANKER, ROTATABLE

**CF**

Catalogue PN	Type	Flange	A (mm)	B (mm)	D (mm)	PCD (mm)	Bolt Holes	Diameter/Thread (mm)
CF-BL-133R	Thru Holes	CF1.33"/CF16	33.70	19.41	7.60	26.97	6	4.37
CF-BL-133RT	Tapped	CF1.33"/CF16	33.70	19.41	7.60	26.97	6	8-32
CF-BL-133RTM	Tapped(M)	CF1.33"/CF16	33.70	19.41	7.60	26.97	6	M4
CF-BL-212R	Thru Holes	CF2.12"/CF25	53.80	27.94	11.90	41.28	4	6.73
CF-BL-212RT	Tapped	CF2.12"/CF25	53.80	27.94	11.90	41.28	4	1/4-28
CF-BL-212RTM	Tapped(M)	CF2.12"/CF25	53.80	27.94	11.90	41.28	4	M6
CF-BL-275R	Thru Holes	CF2.75"/CF35	69.30	48.31	12.70	58.72	6	6.73
CF-BL-275RT	Tapped	CF2.75"/CF35	69.30	48.31	12.70	58.72	6	1/4-28
CF-BL-275RTM	Tapped(M)	CF2.75"/CF35	69.30	48.31	12.70	58.72	6	M6
CF-BL-338R	Thru Holes	CF3.38"/CF50	85.30	54.50	17.40	72.39	8	8.43
CF-BL-338RT	Tapped	CF3.38"/CF50	85.30	54.50	17.40	72.39	8	5/16-24
CF-BL-338RTM	Tapped(M)	CF3.38"/CF50	85.30	54.50	17.40	72.39	8	M8
CF-BL-450R	Thru Holes	CF4.50"/CF63	113.50	72.39	19.10	92.15	8	8.43
CF-BL-450RT	Tapped	CF4.50"/CF63	113.50	72.39	19.10	92.15	8	5/16-24
CF-BL-450RTM	Tapped(M)	CF4.50"/CF63	113.50	72.39	19.10	92.15	8	M8
CF-BL-462R	Thru Holes	CF4.62"/CF80	117.00	79.71	20.60	102.36	10	8.43
CF-BL-462RT	Tapped	CF4.62"/CF80	117.00	79.71	20.60	102.36	10	5/16-24
CF-BL-462RTM	Tapped(M)	CF4.62"/CF80	117.00	79.71	20.60	102.36	10	M8
CF-BL-600R	Thru Holes	CF6.00"/CF100	151.60	106.17	21.30	130.25	16	8.43
CF-BL-600RT	Tapped	CF6.00"/CF100	151.60	106.17	21.30	130.25	16	5/16-24
CF-BL-600RTM	Tapped(M)	CF6.00"/CF100	151.60	106.17	21.30	130.25	16	M8
CF-BL-675R	Thru Holes	CF6.75"/CF130	170.69	129.50	21.30	151.61	18	8.43
CF-BL-675RT	Tapped	CF6.75"/CF130	170.69	129.50	21.30	151.61	18	5/16-24
CF-BL-675RTM	Tapped(M)	CF6.75"/CF130	170.69	129.50	21.30	151.61	18	M8
CF-BL-800R	Thru Holes	CF8.00"/CF160	202.44	155.70	23.90	181.05	20	8.43
CF-BL-800RT	Tapped	CF8.00"/CF160	202.44	155.70	23.90	181.05	20	5/16-24
CF-BL-800RTM	Tapped(M)	CF8.00"/CF160	202.44	155.70	23.90	181.05	20	M8
CF-BL-1000R	Thru Holes	CF10.00"/CF200	253.24	208.28	24.60	231.85	24	8.43
CF-BL-1000RT	Tapped	CF10.00"/CF200	253.24	208.28	24.60	231.85	24	5/16-24
CF-BL-1000RTM	Tapped(M)	CF10.00"/CF200	253.24	208.28	24.60	231.85	24	M8
CF-BL-1200R	Thru Holes	CF12.00"/CF250	304.04	256.03	25.90	283.97	32	8.43
CF-BL-1200RT	Tapped	CF12.00"/CF250	304.04	256.03	25.90	283.97	32	5/16-24
CF-BL-1200RTM	Tapped(M)	CF12.00"/CF250	304.04	256.03	25.90	283.97	32	M8
CF-BL-1325R	Thru Holes	CF13.25"/CF270	335.79	276.30	28.45	306.32	30	10.49
CF-BL-1325RT	Tapped	CF13.25"/CF270	335.79	276.30	28.45	306.32	30	3/8-24
CF-BL-1325RTM	Tapped(M)	CF13.25"/CF270	335.79	276.30	28.45	306.32	30	M10
CF-BL-1400R	Thru Holes	CF14.00"/CF300	354.84	305.82	28.45	325.37	30	10.49
CF-BL-1400RT	Tapped	CF14.00"/CF300	354.84	305.82	28.45	325.37	30	3/8-24
CF-BL-1400RTM	Tapped(M)	CF14.00"/CF300	354.84	305.82	28.45	325.37	30	M10
CF-BL-1650R	Thru Holes	CF16.50"/CF350	418.34	359.61	28.45	388.87	36	10.49
CF-BL1650RT	Tapped	CF16.50"/CF350	418.34	359.61	28.45	388.87	36	3/8-24
CF-BL1650RTM	Tapped(M)	CF16.50"/CF350	418.34	359.61	28.45	388.87	36	M10



# CF Flanges & Fittings



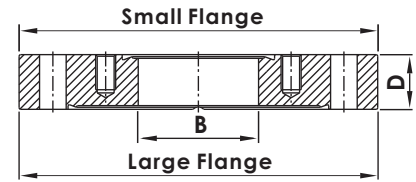
## CF DOUBLE FACE FLANGES

Catalogue PN	Type	Flange-Tube	A (mm)	B (mm)	D (mm)	Bolt Holes	Diameter/Thread (mm)
CF-DF-133	Blank	CF1.33"	33.70	-	7.60	6	4.37
CF-DF-133x075	Bored	CF1.33" - 3/4"	33.70	15.88	7.60	6	4.37
CF-DF-212	Blank	CF2.12"	53.80	-	11.90	4	6.73
CF-DF-212x100	Bored	CF2.12" - 1.0"	53.80	25.65	11.90	4	6.73
CF-DF-275	Blank	CF2.75"	69.30	-	12.70	6	6.73
CF-DF-275x150	Bored	CF2.75" - 1.5"	69.30	38.35	12.70	6	6.73
CF-DF-338	Blank	CF3.38"	85.30	-	16.00	8	8.43
CF-DF-338x200	Bored	CF3.38" - 2.0"	85.30	51.05	16.00	8	8.43
CF-DF-450	Blank	CF4.50"	113.50	-	17.40	8	8.43
CF-DF-450x250	Bored	CF4.50" - 2.5"	113.50	63.75	17.40	8	8.43
CF-DF-462	Blank	CF4.62"	117.00	-	19.10	10	8.43
CF-DF-462x300	Bored	CF4.62" - 3.0"	117.00	79.71	19.10	10	8.43
CF-DF-600	Blank	CF6.00"	151.60	-	19.80	16	8.43
CF-DF-600x400	Bored	CF6.00" - 4.0"	151.60	101.85	19.80	16	8.43
CF-DF-675	Blank	CF6.75"	170.69	-	21.34	18	8.43
CF-DF-675x500	Bored	CF6.75" - 5.0"	170.69	127.25	21.34	18	8.43
CF-DF-800	Blank	CF8.00"	202.44	-	22.35	20	8.43
CF-DF-800x600	Bored	CF8.00" - 6.0"	202.44	152.65	22.35	20	8.43
CF-DF-1000	Blank	CF10.0"	253.24	-	24.60	24	8.43
CF-DF-1000x800	Bored	CF10.0" - 8.0"	253.24	203.45	24.60	24	8.43
CF-DF-1325	Blank	CF13.25"	335.79	-	28.45	30	10.49
CF-DF-1325x1000	Bored	CF13.25" - 10"	335.79	254.50	28.45	30	10.49

**CF**

# CF Flanges & Fittings

## CF ZERO LENGTH REDUCERS



CF

Catalogue PN	Large Flange	Small Flange	Tube Size	B (mm)	D (mm)
CF-ZL-212x133N	CF2.12" Tapped holes	CF1.33" Tapped holes	3/4"	15.75	11.90
CF-ZL-275x133Z	CF2.75" Thru holes	CF1.33" Tapped holes	3/4"	15.75	12.70
CF-ZL-275x212N	CF2.75" Tapped holes	CF2.12" Tapped holes	1.0"	25.40	12.70
CF-ZL-338x133Z	CF3.38" Thru holes	CF1.33" Tapped holes	3/4"	15.75	16.00
CF-ZL-338x212Z	CF3.38" Thru holes	CF2.12" Tapped holes	1.0"	25.40	16.00
CF-ZL-338x275N	CF3.38" Tapped holes	CF2.75" Tapped holes	1.5"	38.10	16.00
CF-ZL-450x133Z	CF4.50" Thru holes	CF1.33" Tapped holes	3/4"	15.75	17.40
CF-ZL-450x212Z	CF4.50" Thru holes	CF2.12" Tapped holes	1.0"	25.40	17.40
CF-ZL-450x275Z	CF4.50" Thru holes	CF2.75" Tapped holes	1.5"	38.10	17.40
CF-ZL-450x338N	CF4.50" Tapped holes	CF3.38" Tapped holes	2.0"	50.80	17.40
CF-ZL-462x133Z	CF4.62" Thru holes	CF1.33" Tapped holes	3/4"	15.75	19.10
CF-ZL-462x212Z	CF4.62" Thru holes	CF2.12" Tapped holes	1.0"	25.40	19.10
CF-ZL-462x275Z	CF4.62" Thru holes	CF2.75" Tapped holes	1.5"	38.10	19.10
CF-ZL-462x338Z	CF4.62" Thru holes	CF3.38" Tapped holes	2.0"	50.80	19.10
CF-ZL-600x133Z	CF6.00" Thru holes	CF1.33" Tapped holes	3/4"	15.75	19.80
CF-ZL-600x212Z	CF6.00" Thru holes	CF2.12" Tapped holes	1.0"	25.40	19.80
CF-ZL-600x275Z	CF6.00" Thru holes	CF2.75" Tapped holes	1.5"	38.10	19.80
CF-ZL-600x338Z	CF6.00" Thru holes	CF3.38" Tapped holes	2.0"	50.80	19.80
CF-ZL-600x450Z	CF6.00" Thru holes	CF4.50" Tapped holes	2.5"	63.50	19.80
CF-ZL-600x462N	CF6.00" Tapped holes	CF4.62" Tapped holes	3.0"	76.20	19.80
CF-ZL-675x275Z	CF6.75" Thru holes	CF2.75" Tapped holes	1.5"	38.10	21.34
CF-ZL-675x450Z	CF6.75" Thru holes	CF4.50" Tapped holes	2.5"	63.50	21.34
CF-ZL-800x133Z	CF8.00" Thru holes	CF1.33" Tapped holes	3/4"	15.75	22.35
CF-ZL-800x275Z	CF8.00" Thru holes	CF2.75" Tapped holes	1.5"	38.10	22.35
CF-ZL-800x450Z	CF8.00" Thru holes	CF4.50" Tapped holes	2.5"	63.50	22.35
CF-ZL-800x600Z	CF8.00" Thru holes	CF6.00" Tapped holes	4.0"	101.60	22.35
CF-ZL-1000x133Z	CF10.00" Thru holes	CF1.33" Tapped holes	3/4"	15.75	24.60
CF-ZL-1000x275Z	CF10.00" Thru holes	CF2.75" Tapped holes	1.5"	38.10	24.60
CF-ZL-1000x450Z	CF10.00" Thru holes	CF4.50" Tapped holes	2.5"	63.50	24.60
CF-ZL-1000x600Z	CF10.00" Thru holes	CF6.00" Tapped holes	4.0"	101.60	24.60
CF-ZL-1000x800Z	CF10.00" Thru holes	CF8.00" Tapped holes	6.0"	152.40	24.60
CF-ZL-1325x133Z	CF13.25" Thru holes	CF1.33" Tapped holes	3/4"	15.75	28.45
CF-ZL-1325x275Z	CF13.25" Thru holes	CF2.75" Tapped holes	1.5"	38.10	28.45
CF-ZL-1325x450Z	CF13.25" Thru holes	CF4.50" Tapped holes	2.5"	63.50	28.45
CF-ZL-1325x600Z	CF13.25" Thru holes	CF6.00" Tapped holes	4.0"	101.60	28.45
CF-ZL-1325x800Z	CF13.25" Thru holes	CF8.00" Tapped holes	6.0"	152.40	28.45
CF-ZL-1325x1000Z	CF13.25" Thru holes	CF10.00" Tapped holes	8.0"	203.20	28.45

The last digit of part number means optional thread types shown as follows.

T: Both Small Flange and Large Flange are Metric Tapped holes.

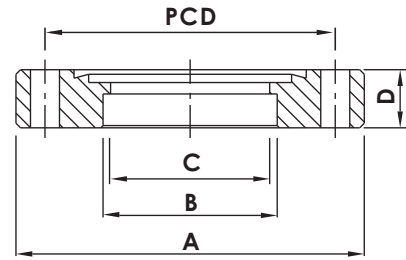
N: Both Small Flange and Large Flange are Inch Tapped holes.

Y: Small Flange(Metric tapped holes)+Large Flange(Thru holes)

Z: Small Flange(Inch tapped holes)+Large Flange(Thru holes)

# CF Flanges & Fittings

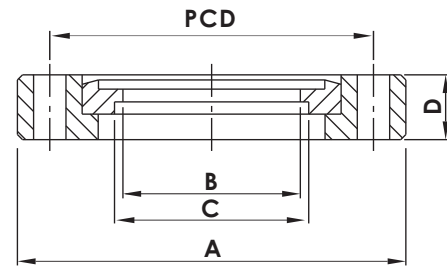
## CF BORED FLANGES



Catalogue PN	Type	Flange-Tube	A (mm)	B (mm)	C (mm)	D (mm)	PCD (mm)	Bolt Holes	Diameter/ Thread (mm)
CF-BF-133x038	Thru Holes	CF1.33"-0.38"	33.70	9.65	-	7.60	26.97	6	4.37
CF-BF-133x038T	Tapped	CF1.33"-0.38"	33.70	9.65	-	7.60	26.97	6	8-32
CF-BF-133x038TM	Tapped(M)	CF1.33"-0.38"	33.70	9.65	-	7.60	26.97	6	M4
CF-BF-133x050	Thru Holes	CF1.33"-0.50"	33.70	12.83	-	7.60	26.97	6	4.37
CF-BF-133x050T	Tapped	CF1.33"-0.50"	33.70	12.83	-	7.60	26.97	6	8-32
CF-BF-133x050TM	Tapped(M)	CF1.33"-0.50"	33.70	12.83	-	7.60	26.97	6	M4
CF-BF-133x075	Thru Holes	CF1.33"-0.75"	33.70	19.30	16.00	7.60	26.97	6	4.37
CF-BF-133x075T	Tapped	CF1.33"-0.75"	33.70	19.30	16.00	7.60	26.97	6	8-32
CF-BF-133x075TM	Tapped(M)	CF1.33"-0.75"	33.70	19.30	16.00	7.60	26.97	6	M4
CF-BF-212x100	Thru Holes	CF2.12"-1.00"	53.80	25.65	23.90	11.90	41.28	4	6.73
CF-BF-212x100T	Tapped	CF2.12"-1.00"	53.80	25.65	23.90	11.90	41.28	4	1/4-28
CF-BF-212x100TM	Tapped(M)	CF2.12"-1.00"	53.80	25.65	23.90	11.90	41.28	4	M6
CF-BF-275x075	Thru Holes	CF2.75"-0.75"	69.30	19.30	16.00	12.70	58.72	6	6.73
CF-BF-275x075T	Tapped	CF2.75"-0.75"	69.30	19.30	16.00	12.70	58.72	6	1/4-28
CF-BF-275x075TM	Tapped(M)	CF2.75"-0.75"	69.30	19.30	16.00	12.70	58.72	6	M6
CF-BF-275x100	Thru Holes	CF2.75"-1.00"	69.30	25.65	22.10	12.70	58.72	6	6.73
CF-BF-275x100T	Tapped	CF2.75"-1.00"	69.30	25.65	22.10	12.70	58.72	6	1/4-28
CF-BF-275x100TM	Tapped(M)	CF2.75"-1.00"	69.30	25.65	22.10	12.70	58.72	6	M6
CF-BF-275x150	Thru Holes	CF2.75"-1.50"	69.30	38.35	36.60	12.70	58.72	6	6.73
CF-BF-275x150T	Tapped	CF2.75"-1.50"	69.30	38.35	36.60	12.70	58.72	6	1/4-28
CF-BF-275x150TM	Tapped(M)	CF2.75"-1.50"	69.30	38.35	36.60	12.70	58.72	6	M6
CF-BF-275x175	Thru Holes	CF2.75"-1.75"	69.30	44.70	41.20	12.70	58.72	6	6.73
CF-BF-275x175T	Tapped	CF2.75"-1.75"	69.30	44.70	41.20	12.70	58.72	6	1/4-28
CF-BF-275x175TM	Tapped(M)	CF2.75"-1.75"	69.30	44.70	41.20	12.70	58.72	6	M6
CF-BF-338x200	Thru Holes	CF3.38"-2.00"	85.30	51.05	49.30	17.40	72.39	8	8.43
CF-BF-338x200T	Tapped	CF3.38"-2.00"	85.30	51.05	49.30	17.40	72.39	8	5/16-24
CF-BF-338x200TM	Tapped(M)	CF3.38"-2.00"	85.30	51.05	49.30	17.40	72.39	8	M8
CF-BF-450x250	Thru Holes	CF4.50"-2.50"	113.50	63.75	62.00	17.40	92.15	8	8.43
CF-BF-450x250T	Tapped	CF4.50"-2.50"	113.50	63.75	62.00	17.40	92.15	8	5/16-24
CF-BF-450x250TM	Tapped(M)	CF4.50"-2.50"	113.50	63.75	62.00	17.40	92.15	8	M8
CF-BF-462x300	Thru Holes	CF4.62"-3.00"	117.00	76.45	74.70	20.60	102.36	10	8.43
CF-BF-462x300T	Tapped	CF4.62"-3.00"	117.00	76.45	74.70	20.60	102.36	10	5/16-24
CF-BF-462x300TM	Tapped(M)	CF4.62"-3.00"	117.00	76.45	74.70	20.60	102.36	10	M8
CF-BF-600x400	Thru Holes	CF6.00"-4.00"	151.60	101.85	99.60	19.80	130.25	16	8.43
CF-BF-600x400T	Tapped	CF6.00"-4.00"	151.60	101.85	99.60	19.80	130.25	16	5/16-24
CF-BF-600x400TM	Tapped(M)	CF6.00"-4.00"	151.60	101.85	99.60	19.80	130.25	16	M8
CF-BF-675x500	Thru Holes	CF6.75"-5.00"	170.69	127.25	123.83	21.34	151.61	18	8.43
CF-BF-675x500T	Tapped	CF6.75"-5.00"	170.69	127.25	123.83	21.34	151.61	18	5/16-24
CF-BF-675x500TM	Tapped(M)	CF6.75"-5.00"	170.69	127.25	123.83	21.34	151.61	18	M8
CF-BF-800x600	Thru Holes	CF8.00"-6.00"	202.44	152.91	150.40	22.35	181.05	20	8.43
CF-BF-800x600T	Tapped	CF8.00"-6.00"	202.44	152.91	150.40	22.35	181.05	20	5/16-24
CF-BF-800x600TM	Tapped(M)	CF8.00"-6.00"	202.44	152.91	150.40	22.35	181.05	20	M8
CF-BF-1000x800	Thru Holes	CF10.0"-8.00"	253.24	203.71	200.40	24.64	231.85	24	8.43
CF-BF-1000x800T	Tapped	CF10.0"-8.00"	253.24	203.71	200.40	24.64	231.85	24	5/16-24
CF-BF-1000x800TM	Tapped(M)	CF10.0"-8.00"	253.24	203.71	200.40	24.64	231.85	24	M8
CF-BF-1200x1000	Thru Holes	CF12.0"-10.0"	304.04	254.51	250.95	25.90	283.97	32	8.43
CF-BF-1200x1000T	Tapped	CF12.0"-10.0"	304.04	254.51	250.95	25.90	283.97	32	5/16-24
CF-BF-1200x1000TM	Tapped(M)	CF12.0"-10.0"	304.04	254.51	250.95	25.90	283.97	32	M8
CF-BF-1325x1000	Thru Holes	CF13.25"-10.0"	335.79	254.51	250.95	28.45	306.32	30	10.49
CF-BF-1325x1000T	Tapped	CF13.25"-10.0"	335.79	254.51	250.95	28.45	306.32	30	3/8-24
CF-BF-1325x1000TM	Tapped(M)	CF13.25"-10.0"	335.79	254.51	250.95	28.45	306.32	30	M10
CF-BF-1400x1200	Thru Holes	CF14.00"-12.0"	354.84	305.31	301.75	28.45	325.37	30	10.49
CF-BF-1400x1200T	Tapped	CF14.00"-12.0"	354.84	305.31	301.75	28.45	325.37	30	3/8-24
CF-BF-1400x1200TM	Tapped(M)	CF14.00"-12.0"	354.84	305.31	301.75	28.45	325.37	30	M10
CF-BF-1650x1400	Thru Holes	CF16.50"-14.0"	418.34	356.11	352.00	28.45	388.87	36	10.49
CF-BF-1650x1400T	Tapped	CF16.50"-14.0"	418.34	356.11	352.00	28.45	388.87	36	3/8-24
CF-BF-1650x1400TM	Tapped(M)	CF16.50"-14.0"	418.34	356.11	352.00	28.45	388.87	36	M10

CF

# CF Flanges & Fittings



## CF BORED FLANGES, ROTABLE

**CF**

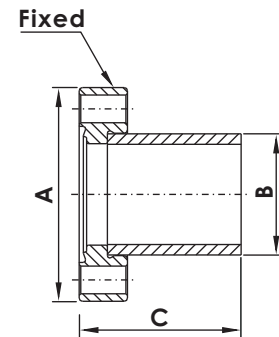
Catalogue PN	Type	Flange-Tube	A (mm)	B (mm)	C (mm)	D (mm)	PCD (mm)	Bolt Holes	Diameter/ Thread (mm)
CF-BF-133x050R	Thru Holes	CF1.33"-0.50"	33.70	12.83	12.83	7.60	26.97	6	4.37
CF-BF-133x050RT	Tapped	CF1.33"-0.50"	33.70	12.83	12.83	7.60	26.97	6	8-32
CF-BF-133x050RTM	Tapped(M)	CF1.33"-0.50"	33.70	12.83	12.83	7.60	26.97	6	M4
CF-BF-133x075R	Thru Holes	CF1.33"-0.75"	33.70	16.00	19.30	7.60	26.97	6	4.37
CF-BF-133x075RT	Tapped	CF1.33"-0.75"	33.70	16.00	19.30	7.60	26.97	6	8-32
CF-BF-133x075RTM	Tapped(M)	CF1.33"-0.75"	33.70	16.00	19.30	7.60	26.97	6	M4
CF-BF-212x100R	Thru Holes	CF2.12"-1.00"	53.80	23.90	25.91	11.90	41.28	4	6.73
CF-BF-212x100RT	Tapped	CF2.12"-1.00"	53.80	23.90	25.91	11.90	41.28	4	1/4-28
CF-BF-212x100RTM	Tapped(M)	CF2.12"-1.00"	53.80	23.90	25.91	11.90	41.28	4	M6
CF-BF-275x075R	Thru Holes	CF2.75"-0.75"	69.30	16.00	19.30	12.70	58.72	6	6.73
CF-BF-275x075RT	Tapped	CF2.75"-0.75"	69.30	16.00	19.30	12.70	58.72	6	1/4-28
CF-BF-275x075RTM	Tapped(M)	CF2.75"-0.75"	69.30	16.00	19.30	12.70	58.72	6	M6
CF-BF-275x150R	Thru Holes	CF2.75"-1.50"	69.30	36.60	38.61	12.70	58.72	6	6.73
CF-BF-275x150RT	Tapped	CF2.75"-1.50"	69.30	36.60	38.61	12.70	58.72	6	1/4-28
CF-BF-275x150RTM	Tapped(M)	CF2.75"-1.50"	69.30	36.60	38.61	12.70	58.72	6	M6
CF-BF-338x200R	Thru Holes	CF3.38"-2.00"	85.30	49.30	51.31	17.40	72.39	8	8.43
CF-BF-338x200RT	Tapped	CF3.38"-2.00"	85.30	49.30	51.31	17.40	72.39	8	5/16-24
CF-BF-338x200RTM	Tapped(M)	CF3.38"-2.00"	85.30	49.30	51.31	17.40	72.39	8	M8
CF-BF-450x250R	Thru Holes	CF4.50"-2.50"	113.50	62.00	64.01	19.10	92.15	8	8.43
CF-BF-450x250RT	Tapped	CF4.50"-2.50"	113.50	62.00	64.01	19.10	92.15	8	5/16-24
CF-BF-450x250RTM	Tapped(M)	CF4.50"-2.50"	113.50	62.00	64.01	19.10	92.15	8	M8
CF-BF-462x300R	Thru Holes	CF4.62"-3.00"	117.00	74.70	76.71	20.60	102.36	10	8.43
CF-BF-462x300RT	Tapped	CF4.62"-3.00"	117.00	74.70	76.71	20.60	102.36	10	5/16-24
CF-BF-462x300RTM	Tapped(M)	CF4.62"-3.00"	117.00	74.70	76.71	20.60	102.36	10	M8
CF-BF-600x400R	Thru Holes	CF6.00"-4.00"	151.60	99.60	102.11	21.30	130.25	16	8.43
CF-BF-600x400RT	Tapped	CF6.00"-4.00"	151.60	99.60	102.11	21.30	130.25	16	5/16-24
CF-BF-600x400RTM	Tapped(M)	CF6.00"-4.00"	151.60	99.60	102.11	21.30	130.25	16	M8
CF-BF-675x500R	Thru Holes	CF6.75"-5.00"	170.69	125.00	127.51	21.30	151.61	18	8.43
CF-BF-675x500RT	Tapped	CF6.75"-5.00"	170.69	125.00	127.51	21.30	151.61	18	5/16-24
CF-BF-675x500RTM	Tapped(M)	CF6.75"-5.00"	170.69	125.00	127.51	21.30	151.61	18	M8
CF-BF-800x600R	Thru Holes	CF8.00"-6.00"	202.44	150.40	152.91	23.90	181.05	20	8.43
CF-BF-800x600RT	Tapped	CF8.00"-6.00"	202.44	150.40	152.91	23.90	181.05	20	5/16-24
CF-BF-800x600RTM	Tapped(M)	CF8.00"-6.00"	202.44	150.40	152.91	23.90	181.05	20	M8
CF-BF-1000x800R	Thru Holes	CF10.0"-8.00"	253.24	200.40	203.71	24.60	231.85	24	8.43
CF-BF-1000x800RT	Tapped	CF10.0"-8.00"	253.24	200.40	203.71	24.60	231.85	24	5/16-24
CF-BF-1000x800RTM	Tapped(M)	CF10.0"-8.00"	253.24	200.40	203.71	24.60	231.85	24	M8
CF-BF-1200x1000R	Thru Holes	CF12.0"-10.0"	304.04	250.95	254.51	25.90	283.97	32	8.43
CF-BF-1200x1000RT	Tapped	CF12.0"-10.0"	304.04	250.95	254.51	25.90	283.97	32	5/16-24
CF-BF-1200x1000RTM	Tapped(M)	CF12.0"-10.0"	304.04	250.95	254.51	25.90	283.97	32	M8
CF-BF-1325x1000R	Thru Holes	CF13.25"-10.0"	335.79	250.95	254.51	28.45	306.32	30	10.49
CF-BF-1325x1000RT	Tapped	CF13.25"-10.0"	335.79	250.95	254.51	28.45	306.32	30	3/8-24
CF-BF-1325x1000RTM	Tapped(M)	CF13.25"-10.0"	335.79	250.95	254.51	28.45	306.32	30	M10
CF-BF-1400x1200R	Thru Holes	CF14.00"-12.0"	354.84	301.75	305.31	28.45	325.37	30	10.49
CF-BF-1400x1200RT	Tapped	CF14.00"-12.0"	354.84	301.75	305.31	28.45	325.37	30	3/8-24
CF-BF-1400x1200RTM	Tapped(M)	CF14.00"-12.0"	354.84	301.75	305.31	28.45	325.37	30	M10
CF-BF-1650x1400R	Thru Holes	CF16.50"-14.0"	418.34	352.55	356.11	28.45	388.87	36	10.49
CF-BF-1650x1400RT	Tapped	CF16.50"-14.0"	418.34	352.55	356.11	28.45	388.87	36	3/8-24
CF-BF-1650x1400RTM	Tapped(M)	CF16.50"-14.0"	418.34	352.55	356.11	28.45	388.87	36	M10

# CF Flanges & Fittings

## CF FLANGE HALF NIPPLES



Catalogue PN	Flange Size	A	B	C
CF-HN-133	CF1.33"	1.33"	19.05	38.10
CF-HN-212	CF2.12"	2.12"	25.40	52.07
CF-HN-275	CF2.75"	2.75"	38.10	62.48
CF-HN-338	CF3.38"	3.38"	50.80	81.79
CF-HN-450	CF4.50"	4.50"	63.50	85.85
CF-HN-462	CF4.62"	4.62"	76.20	89.66
CF-HN-600	CF6.00"	6.00"	101.60	109.73
CF-HN-675	CF6.75"	6.75"	127.00	109.70
CF-HN-800	CF8.00"	8.00"	152.40	139.70
CF-HN-1000	CF10.00"	10.00"	203.20	203.20

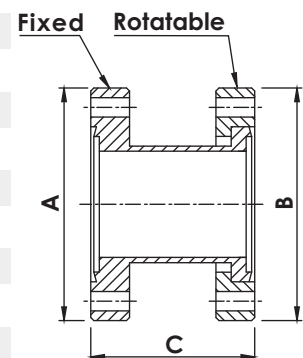


CF

## CF FLANGE FULL NIPPLES



Catalogue PN	Flange Size	A	B	C
CF-FN-133	CF1.33"	1.33"	1.33"	76.20
CF-FN-212	CF2.12"	2.12"	2.12"	104.14
CF-FN-275	CF2.75"	2.75"	2.75"	124.97
CF-FN-338	CF3.38"	3.38"	3.38"	163.58
CF-FN-450	CF4.50"	4.50"	4.50"	171.70
CF-FN-462	CF4.62"	4.62"	4.62"	179.32
CF-FN-600	CF6.00"	6.00"	6.00"	219.46
CF-FN-675	CF6.75"	6.75"	6.75"	214.90
CF-FN-800	CF8.00"	8.00"	8.00"	200.00
CF-FN-1000	CF10.00"	10.00"	10.00"	406.40



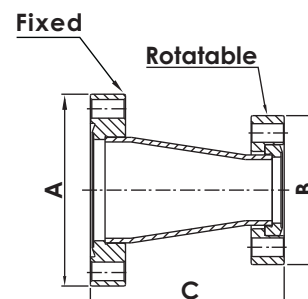
# CF Flanges & Fittings

CF



## CF FLANGE CONICAL REDUCERS

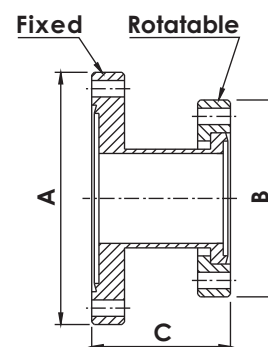
Catalogue PN	Flange Size	A	B	C
CF-CR-212x133	CF2.12"/1.33"	2.12"	1.33"	51.90
CF-CR-275x133	CF2.75"/1.33"	2.75"	1.33"	78.30
CF-CR-275x212	CF2.75"/2.12"	2.75"	2.12"	69.90
CF-CR-338x212	CF3.38"/2.12"	3.38"	2.12"	70.30
CF-CR-338x275	CF3.38"/2.75"	3.38"	2.75"	71.30
CF-CR-450x275	CF4.50"/2.75"	4.50"	2.75"	75.20
CF-CR-450x338	CF4.50"/3.38"	4.50"	3.38"	75.60
CF-CR-462x275	CF4.62"/2.75"	4.62"	2.75"	104.50
CF-CR-462x338	CF4.62"/3.38"	4.62"	3.38"	104.90
CF-CR-462x450	CF4.62"/4.50"	4.62"	4.50"	108.70
CF-CR-600x338	CF6.00"/3.38"	6.00"	3.38"	108.90
CF-CR-600x450	CF6.00"/4.50"	6.00"	4.50"	112.70
CF-CR-600x462	CF6.00"/4.62"	6.00"	4.62"	110.30



## CF FLANGE STRAIGHT REDUCERS



Catalogue PN	Flange Size	A	B	C
CF-SR-275x133	CF2.75"/1.33"	2.75"	1.33"	45.00
CF-SR-450x133	CF4.50"/1.33"	4.50"	1.33"	70.00
CF-SR-450x275	CF4.50"/2.75"	4.50"	2.75"	75.00
CF-SR-600x275	CF6.00"/2.75"	6.00"	2.75"	127.00
CF-SR-600x450	CF6.00"/4.50"	6.00"	4.50"	95.00
CF-SR-800x275	CF8.00"/2.75"	8.00"	2.75"	127.00
CF-SR-800x450	CF8.00"/4.50"	8.00"	4.50"	127.00
CF-SR-800x600	CF8.00"/6.00"	8.00"	6.00"	127.00
CF-SR-1000x275	CF10.00"/2.75"	10.00"	2.75"	127.00
CF-SR-1000x450	CF10.00"/4.50"	10.00"	4.50"	127.00
CF-SR-1000x600	CF10.00"/6.00"	10.00"	6.00"	127.00
CF-SR-1000x800	CF10.00"/8.00"	10.00"	8.00"	127.00

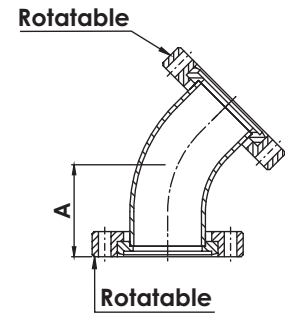


# CF Flanges & Fittings

## CF 45° ELBOWS



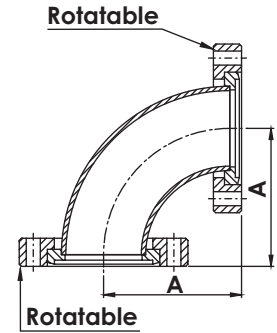
Catalogue PN	Flange Size	A
CF-45EL-133	CF1.33"	23.80
CF-45EL-212	CF2.12"	28.90
CF-45EL-275	CF2.75"	44.20
CF-45EL-338	CF3.38"	52.50
CF-45EL-450	CF4.50"	85.60
CF-45EL-462	CF4.62"	100.60
CF-45EL-600	CF6.00"	132.50



## CF 90° ELBOWS



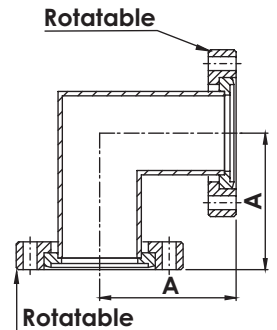
Catalogue PN	Flange Size	A
CF-90EL-133	CF1.33"	38.10
CF-90EL-212	CF2.12"	42.40
CF-90EL-275	CF2.75"	62.50
CF-90EL-338	CF3.38"	81.80
CF-90EL-450	CF4.50"	104.60
CF-90EL-462	CF4.62"	121.40
CF-90EL-600	CF6.00"	163.60



## CF 90° MITERED ELBOWS



Catalogue PN	Flange Size	A
CF-90MEL-133	CF1.33"	38.10
CF-90MEL-212	CF2.12"	52.00
CF-90MEL-275	CF2.75"	62.50
CF-90MEL-338	CF3.38"	81.80
CF-90MEL-450	CF4.50"	85.90
CF-90MEL-462	CF4.62"	89.70
CF-90MEL-600	CF6.00"	109.70



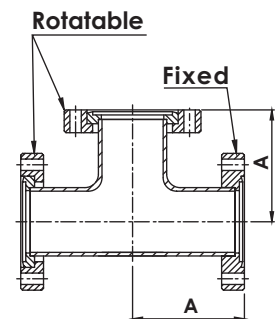
# CF Flanges & Fittings

## CF EQUAL TEES



CF

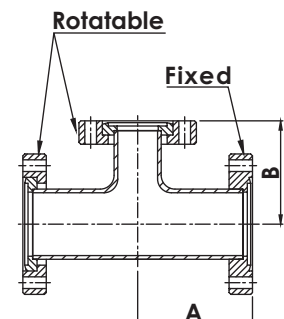
Catalogue PN	Flange Size	A
CF-ET-133	CF1.33"	38.10
CF-ET-212	CF2.12"	52.05
CF-ET-275	CF2.75"	62.50
CF-ET-338	CF3.38"	81.80
CF-ET-450	CF4.50"	85.85
CF-ET-450-L	CF4.50"-L	104.65
CF-ET-462	CF4.62"	89.70
CF-ET-600	CF6.00"	109.70
CF-ET-600-L	CF6.00"-L	134.88



## CF REDUCING TEES



Catalogue PN	Flange Size	A	B
CF-RT-275x133	CF2.75"/1.33"	62.50	47.50
CF-RT-275x212	CF2.75"/2.12"	62.50	58.20
CF-RT-338x133	CF3.38"/1.33"	81.80	54.10
CF-RT-338x275	CF3.38"/2.75"	81.80	68.80
CF-RT-450x275	CF4.50"/2.75"	85.90	75.20
CF-RT-450x338	CF4.50"/3.38"	85.90	88.40
CF-RT-462x338	CF4.62"/3.38"	89.70	94.70
CF-RT-462x450	CF4.62"/4.50"	89.70	92.20
CF-RT-600x275	CF6.00"/2.75"	109.70	94.20
CF-RT-600x338	CF6.00"/3.38"	109.70	107.40
CF-RT-600x450	CF6.00"/4.50"	109.70	104.90
CF-RT-600x462	CF6.00"/4.62"	109.70	102.40



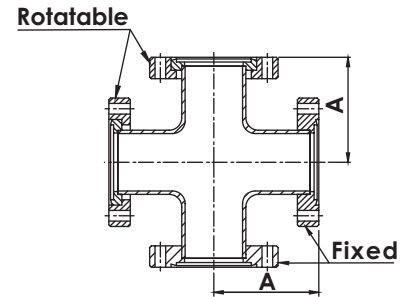


# CF Flanges & Fittings

## CF 4-WAY CROSSES



Catalogue PN	Flange Size	A
CF-4C-133	CF1.33"	38.10
CF-4C-212	CF2.12"	52.00
CF-4C-275	CF2.75"	62.50
CF-4C-338	CF3.38"	81.80
CF-4C-450	CF4.50"	85.90
CF-4C-462	CF4.62"	89.70
CF-4C-600	CF6.00"	109.70

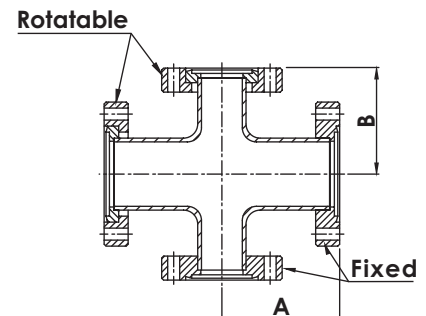


CF

## CF 4-WAY REDUCING CROSSES



Catalogue PN	Flange Size	A	B
CF-4RC-275x133	CF2.75"/1.33"	62.50	47.50
CF-4RC-275x212	CF2.75"/2.12"	62.50	58.20
CF-4RC-338x133	CF3.38"/1.33"	81.80	54.10
CF-4RC-338x275	CF3.38"/2.75"	81.80	68.80
CF-4RC-450x275	CF4.50"/2.75"	85.90	75.20
CF-4RC-450x338	CF4.50"/3.38"	85.90	88.40
CF-4RC-462x338	CF4.62"/3.38"	89.70	94.70
CF-4RC-462x450	CF4.62"/4.50"	89.70	92.20
CF-4RC-600x275	CF6.00"/2.75"	109.70	94.20
CF-4RC-600x338	CF6.00"/3.38"	109.70	107.40
CF-4RC-600x450	CF6.00"/4.50"	109.70	104.90
CF-4RC-600x462	CF6.00"/4.62"	109.70	104.90

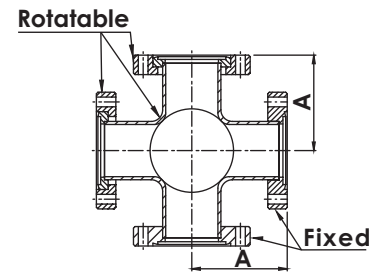


# CF Flanges & Fittings

## CF 5-WAY CROSSES



Catalogue PN	Flange Size	A
CF-5C-133	CF1.33"	38.10
CF-5C-212	CF2.12"	52.00
CF-5C-275	CF2.75"	62.50
CF-5C-338	CF3.38"	81.80
CF-5C-450	CF4.50"	85.90
CF-5C-462	CF4.62"	92.20
CF-5C-600	CF6.00"	134.90

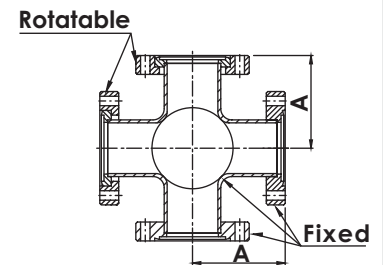


CF

## CF 6-WAY CROSSES



Catalogue PN	Flange Size	A
CF-6C-133	CF1.33"	38.10
CF-6C-212	CF2.12"	52.07
CF-6C-275	CF2.75"	62.48
CF-6C-338	CF3.38"	81.79
CF-6C-450	CF4.50"	85.85
CF-6C-462	CF4.62"	92.20
CF-6C-600	CF6.00"	134.90

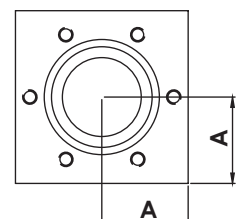


NOTE: 316LNSS (316L TUBE+316LN FLANGE) MATERIAL AVAILABLE ON REQUEST.  
 NOTE: POLISHED AND ELECTRO- POLISHED TUBE FINISHES AVAILABLE ON REQUEST.

## CF 6-WAY CUBES

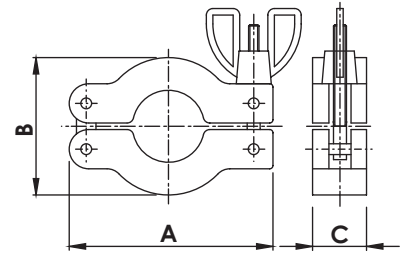


Catalogue PN	Flange Size	A	Type
CF-6CU-133T	CF1.33"	17.00	INCH TAPPED
CF-6CU-133TM	CF1.33"	17.00	METRIC TAPPED
CF-6CU-275T	CF2.75"	35.05	INCH TAPPED
CF-6CU-275TM	CF2.75"	35.05	METRIC TAPPED
CF-6CU-338T	CF3.38"	42.50	INCH TAPPED
CF-6CU-338TM	CF3.38"	42.50	METRIC TAPPED
CF-6CU-450T	CF4.50"	56.75	INCH TAPPED
CF-6CU-450TM	CF4.50"	56.75	METRIC TAPPED
CF-6CU-600T	CF6.00"	75.80	INCH TAPPED
CF-6CU-600TM	CF6.00"	75.80	METRIC TAPPED



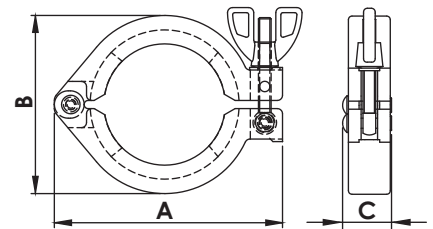
# KF Flanges & Fittings

## KF WING-NUT CLAMPS TYPE 1



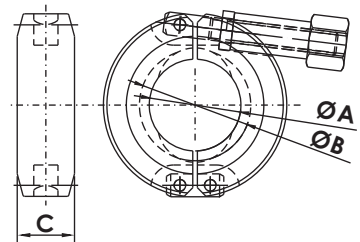
Catalogue PN	Flange Size	A	B	C
KF-WC1-1016	KF10/16	62.30	41.00	16.50
KF-WC1-25	KF25	72.40	54.00	16.50
KF-WC1-40	KF40	89.70	69.00	16.50
KF-WC1-50	KF50	114.00	90.00	21.50

## KF WING-NUT CLAMPS TYPE 2



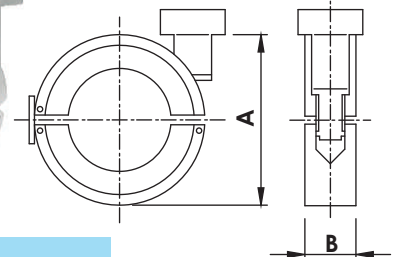
Catalogue PN	Size	A	B	C
KF-WC2-1016	KF10/16	62.70	41.40	19.30
KF-WC2-25	KF25	72.00	53.10	19.30
KF-WC2-40	KF40	90.00	70.20	19.30
KF-WC2-50	KF50	113.40	93.40	22.80

## KF CNC SS304 CLAMPS



Catalogue PN	Size	ØA	ØB	C
KF-CC-1016-04	KF10/16	25.40	30.80	15.90
KF-CC-25-04	KF25	34.12	40.94	15.90
KF-CC-40-04	KF40	49.40	55.70	15.90
KF-CC-50-04	KF50	69.00	75.60	15.90

## KF CNC MACHINED CLAMPS

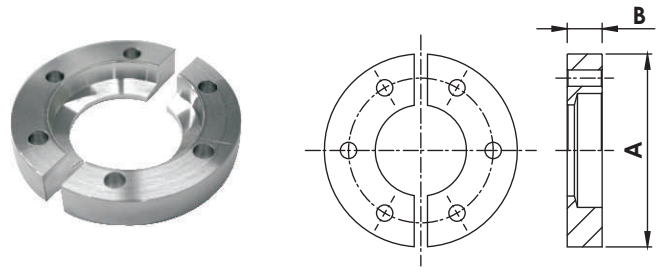


Catalogue PN	Size	A	B
KF-CC-1016-AL	KF10/16	50.80	15.90
KF-CC-25-AL	KF25	63.60	15.90
KF-CC-40-AL	KF40	74.70	15.90
KF-CC-50-AL	KF50	101.60	15.90

**KF  
DN**

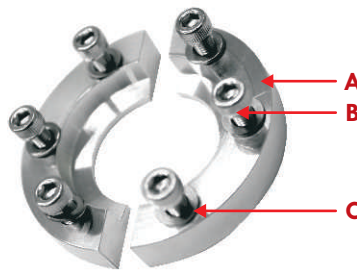
# KF Flanges & Fittings

## KF BULKHEAD CLAMP



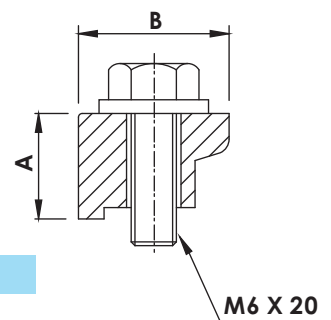
Catalogue PN	Size	A	B	Bolt Hole Size	No of Bolt Holes
KF-BC-16	KF16	50.80	9.20	5.30	6
KF-BC-25	KF25	60.30	9.90	5.30	6
KF-BC-40	KF40	74.60	9.30	5.30	6
KF-BC-50	KF50	95.20	10.30	5.30	8

## KF BULKHEAD CLAMP SETS



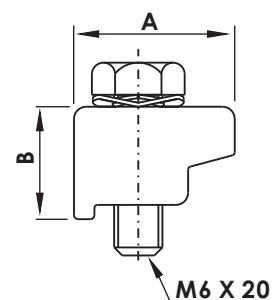
Catalogue PN	Size	A	B	C
KF-BCS-16	NW16	KF-BC-16	10-32UNF-15.9L(6PCS)	10-32UNF(6PCS)
KF-BCS-25	NW25	KF-BC-25	10-32UNF-15.9L(6PCS)	10-32UNF(6PCS)
KF-BCS-40	NW40	KF-BC-40	10-32UNF-15.9L(6PCS)	10-32UNF(6PCS)
KF-BCS-50	NW50	KF-BC-50	10-32UNF-15.9L(8PCS)	10-32UNF(8PCS)

## KF WALL CLAMPS with BOLT



Catalogue PN	Size	A	B
KF-WC1-1650	KF16~KF50	15.00	20.00

## KF SINGLE CLAW CLAMP KIT



Catalogue PN	Size	A	B
KF-SC-1650	KF16~KF50	20.00	14.00

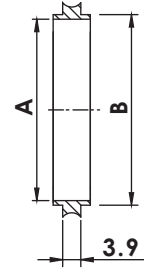
**K F  
DN**

# KF Flanges & Fittings

## KF CENTERING RINGS



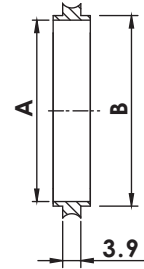
Catalogue PN	Size	A	B
KF-CRN-10	KF10	10.00	12.00
KF-CRN-16	KF16	16.00	17.00
KF-CRN-25	KF25	25.00	26.00
KF-CRN-40	KF40	40.00	41.00
KF-CRN-50	KF50	50.00	52.00



## KF CENTERING RINGS, ALUMINUM



Catalogue PN	Size	A	B
KF-CRN-10-AL	KF10	10.00	12.00
KF-CRN-16-AL	KF16	16.00	17.00
KF-CRN-25-AL	KF25	25.00	26.00
KF-CRN-40-AL	KF40	40.00	41.00
KF-CRN-50-AL	KF50	50.00	52.00

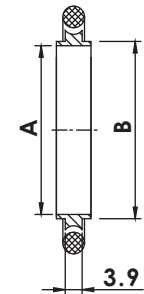


**KF  
DN**

## KF CENTERING RINGS with O-RINGS



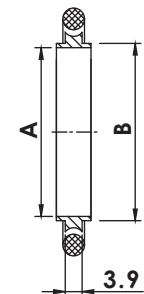
Catalogue PN	Size	A	B
KF-CRO-10	KF10	10.00	12.00
KF-CRO-16	KF16	16.00	17.00
KF-CRO-25	KF25	25.00	26.00
KF-CRO-40	KF40	40.00	41.00
KF-CRO-50	KF50	50.00	52.00



## KF CENTERING RINGS with O-RINGS, ALUMINUM

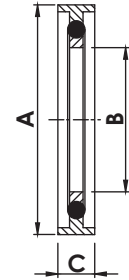


Catalogue PN	Size	A	B
KF-CRO-10-AL	KF10	10.00	12.00
KF-CRO-16-AL	KF16	16.00	17.00
KF-CRO-25-AL	KF25	25.00	26.00
KF-CRO-40-AL	KF40	40.00	41.00
KF-CRO-50-AL	KF50	50.00	52.00



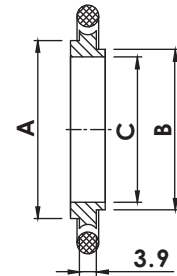
# KF Flanges & Fittings

## KF CENTERING RINGS with O-RINGS & SPACERS



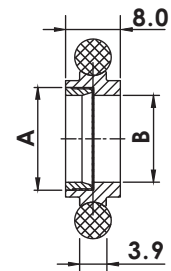
Catalogue PN	Size	A	B	C
KF-CROS-16	KF16	32.50	16.00	7.00
KF-CROS-25	KF25	42.50	25.00	7.00
KF-CROS-40	KF40	57.50	40.00	7.00
KF-CROS-50	KF50	77.50	50.00	7.00

## KF ADAPTIVE CENTERING RINGS with O-RINGS



Catalogue PN	Size	A	B	C
KF-CROA-1016	KF10/16	17.00	12.00	10.00
KF-CROA-2025	KF20/25	26.00	22.00	20.00
KF-CROA-3240	KF32/40	41.00	34.00	32.00

## KF SCREENED CENTERING RINGS with O-RINGS

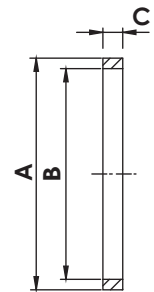


Catalogue PN	Size	A	B
KF-CROSC-16	KF16	15.00	12.70
KF-CROSC-25	KF25	23.80	21.80
KF-CROSC-40	KF40	38.80	36.80
KF-CROSC-50	KF50	50.00	47.75

**K F  
DN**

# KF Flanges & Fittings

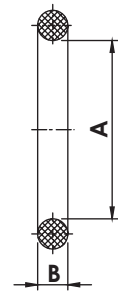
## KF OVER PRESSURE RINGS



Catalogue PN	Size	A	B	C
KF-OR-10	KF 10	31.80	27.70	3.60
KF-OR-16	KF 16	31.80	29.90	3.60
KF-OR-25	KF 25	41.90	39.10	3.60
KF-OR-40	KF 40	57.20	54.50	3.60
KF-OR-50	KF 50	69.90	67.60	3.60

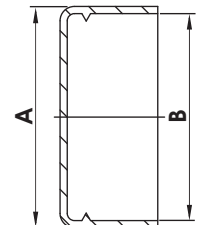
**K F  
DN**

## KF REPLACEMENT O-RINGS



Catalogue PN	Size	A	B
KF-RO-10	KF 10	15.24	5.33
KF-RO-16	KF 16	18.42	5.33
KF-RO-25	KF 25	27.94	5.33
KF-RO-40	KF 40	40.64	5.33
KF-RO-50	KF 50	53.34	5.33

## KF PLASTIC CAP



Catalogue PN	Size	A	B
KF-PC-1016	KF10/ KF16	32.00	30.00
KF-PC-25	KF25	42.00	40.00
KF-PC-40	KF40	57.00	55.00
KF-PC-50	KF50	77.00	75.00

# KF Flanges & Fittings

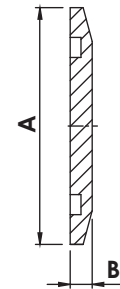
## KF BLANK FLANGES

Catalogue PN	Size	A	B
KF-BL-10	KF10	30.00	5.10
KF-BL-16	KF16	30.00	5.10
KF-BL-25	KF25	40.00	5.10
KF-BL-40	KF40	55.00	5.10
KF-BL-50	KF50	75.00	5.10



## KF BLANK FLANGES, ALUMINUM

Catalogue PN	Size	A	B
KF-BL-10-AL	KF10	30.00	5.10
KF-BL-16-AL	KF16	30.00	5.10
KF-BL-25-AL	KF25	40.00	5.10
KF-BL-40-AL	KF40	55.00	5.10
KF-BL-50-AL	KF50	75.00	5.10



**K F  
DN**

## KF BORED FLANGES



Catalogue PN	Size		A	B	C	D	E
KF-BF-10x038	KF 10-3/8"	A	30.00	12.20	-	9.65	5.10
KF-BF-16x025	KF16-1/4"	A	30.00	17.20	-	6.50	5.10
KF-BF-16x038	KF16-3/8"	A	30.00	17.20	-	9.65	5.10
KF-BF-16x050	KF16-1/2"	B	30.00	17.20	10.16	12.95	5.10
KF-BF-16x075	KF16-3/4"	B	30.00	17.20	16.51	19.30	4.40
KF-BF-25x025	KF25-1/4"	A	40.00	26.20	-	6.50	5.10
KF-BF-25x038	KF25-3/8"	A	40.00	26.20	-	9.65	5.10
KF-BF-25x050	KF25-1/2"	B	40.00	26.20	10.16	12.95	5.10
KF-BF-25x075	KF25-3/4"	B	40.00	26.20	16.51	19.30	5.10
KF-BF-25x100	KF25-1.0"	B	40.00	26.20	22.88	25.65	4.90
KF-BF-40x025	KF40-1/4"	A	55.00	41.20	-	6.50	5.10
KF-BF-40x038	KF40-3/8"	A	55.00	41.20	-	9.65	5.10
KF-BF-40x050	KF40-1/2"	B	55.00	41.20	10.16	12.95	5.10
KF-BF-40x075	KF40-3/4"	B	55.00	41.20	16.51	19.30	5.10
KF-BF-40x100	KF40-1.0"	B	55.00	41.20	22.88	25.65	5.10
KF-BF-40x150	KF40-1.5"	B	55.00	41.20	35.58	38.35	5.10
KF-BF-50x025	KF50-1/4"	A	75.00	52.20	-	6.50	5.10
KF-BF-50x038	KF50-3/8"	A	75.00	52.20	-	9.65	5.10
KF-BF-50x050	KF50-1/2"	B	75.00	52.20	10.16	12.95	5.10
KF-BF-50x075	KF50-3/4"	B	75.00	52.20	16.51	19.30	5.10
KF-BF-50x100	KF50-1.0"	B	75.00	52.20	22.88	25.65	5.10
KF-BF-50x150	KF50-1.5"	B	75.00	52.20	35.58	38.35	5.10
KF-BF-50x200	KF50-2.0"	B	75.00	52.20	48.26	51.05	5.10

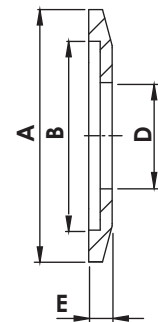


Diagram A

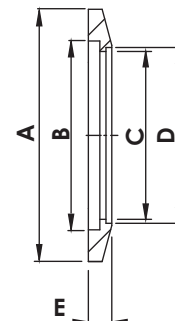


Diagram B

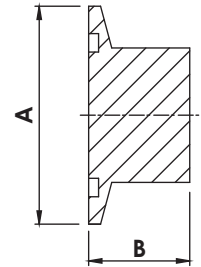


# KF Flanges & Fittings

## KF UNBORED STUB FLANGES



Catalogue PN	Size	A	B
KF-UF-10	KF 10-0.56"L	30.00	14.20
KF-UF-16	KF 16-0.56"L	30.00	14.20
KF-UF-16-1	KF 16-0.75"L	30.00	19.10
KF-UF-25	KF 25-0.47"L	40.00	11.90
KF-UF-25-1	KF 25-0.75"L	40.00	19.10
KF-UF-40	KF 40-0.50"L	55.00	12.70
KF-UF-40-1	KF 40-1.00"L	55.00	25.40
KF-UF-50	KF 50-0.62"L	75.00	15.70
KF-UF-50-1	KF 50-1.00"L	75.00	25.40

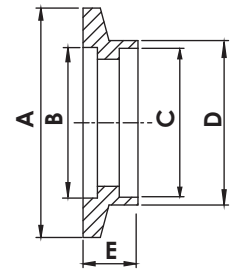


**KF  
DN**

## KF SOCKET WELD FLANGES, SHORT



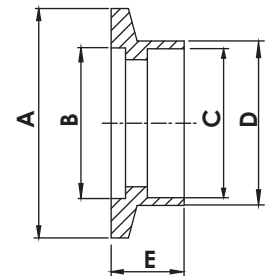
Catalogue PN	Size	A	B	C	D	E
KF-SWS-10	KF10	30.00	12.20	12.90	16.00	6.35
KF-SWS-16	KF16	30.00	17.20	19.30	22.40	6.35
KF-SWS-25	KF25	40.00	26.20	25.70	28.80	6.35
KF-SWS-40	KF40	55.00	41.20	38.40	41.50	6.35
KF-SWS-50	KF50	75.00	52.20	51.10	54.20	6.35



## KF SOCKET WELD FLANGES, LONG



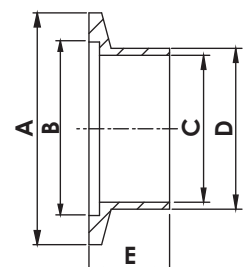
Catalogue PN	Size	A	B	C	D	E
KF-SWL-10	KF10	30.00	12.20	13.00	15.50	12.70
KF-SWL-16	KF16	30.00	17.20	19.30	22.20	12.70
KF-SWL-25	KF25	40.00	26.20	25.90	28.60	12.70
KF-SWL-40	KF40	55.00	41.20	38.60	44.50	12.70
KF-SWL-50	KF50	75.00	52.20	51.30	57.20	12.70



## KF BUTT WELD STUB FLANGES, SHORT



Catalogue PN	Size	A	B	C	D	E
KF-BWS-10	KF10	30.00	12.20	9.40	12.70	12.70
KF-BWS-16	KF16	30.00	12.70	15.70	19.10	12.70
KF-BWS-25	KF25	40.00	26.20	22.10	25.40	12.70
KF-BWS-40	KF40	55.00	41.20	34.80	38.10	19.10
KF-BWS-50	KF50	75.00	52.20	47.50	50.80	19.10

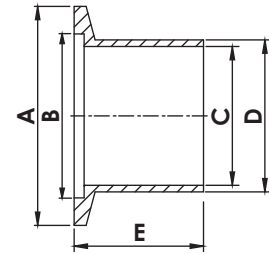


# KF Flanges & Fittings



## KF BUTT WELD STUB FLANGES, LONG

Catalogue PN	Size	A	B	C	D	E
KF-BWL-10	KF10	30.00	12.20	9.40	12.70	40.00
KF-BWL-1016	K10/16	30.00	17.20	9.40	12.70	40.00
KF-BWL-16	KF16	30.00	17.20	15.75	19.05	40.00
KF-BWL-25	KF25	40.00	26.20	22.10	25.40	40.00
KF-BWL-40	KF40	55.00	41.20	34.90	38.10	40.00
KF-BWL-50	KF50	75.00	52.20	47.60	50.80	40.00



## KF HALF NIPPLES

Catalogue PN	Size	Diagram	A	B	C	D	E
KF-HN-10	KF 10-1.25"	A	30.00	12.20	9.40	12.70	31.75
KF-HN-16	KF 16-1.15"	A	30.00	17.20	15.80	19.10	29.21
KF-HN-16-1	KF 16-1.50"	A	30.00	17.20	15.80	19.10	38.10
KF-HN-25	KF 25-2.03"	B	40.00	26.20	22.10	25.40	51.56
KF-HN-25-1	KF 25-2.04"	A	40.00	26.20	22.10	25.40	51.80
KF-HN-40	KF40-2.40"	B	55.00	41.20	34.80	38.10	60.96
KF-HN-40-1	KF40-2.46"	B	55.00	41.20	34.80	38.10	62.50
KF-HN-50	KF50-3.15"	B	75.00	52.20	47.50	50.80	80.01
KF-HN-50-1	KF50-3.21"	B	75.00	52.20	47.50	50.80	81.50

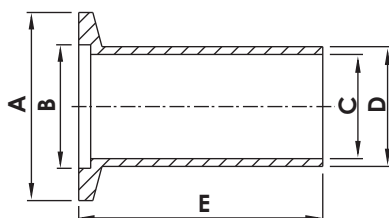


Diagram A  
Machined

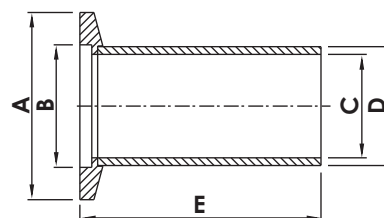
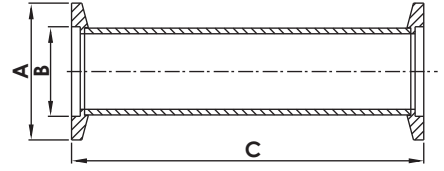


Diagram B  
Welded

**K F  
DN**

# KF Flanges & Fittings

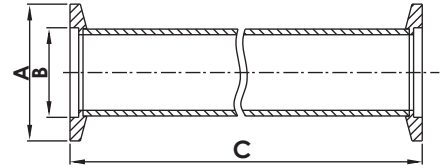
## KF FULL NIPPLES



Catalogue PN	Size	A	B	C
KF-FN-10	KF10-2.50"	30.00	12.20	63.50
KF-FN-16	KF16-2.30"	30.00	17.20	58.40
KF-FN-25	KF25-4.00"	40.00	26.20	103.10
KF-FN-40	KF40-4.80"	55.00	41.20	121.90
KF-FN-50	KF50-6.30"	75.00	52.20	160.00

**K F  
DN**

## KF FULL NIPPLES, LONG



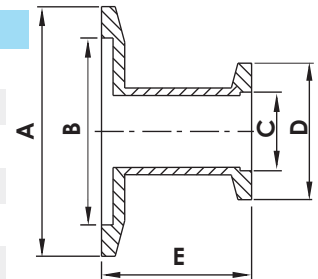
Catalogue PN	Size	A	B	C
KF-FNL-16	KF16-12.60"	30.00	17.20	320.00
KF-FNL-25	KF25-12.60"	40.00	26.20	320.00
KF-FNL-40	KF40-12.60"	55.00	41.20	320.00
KF-FNL-50	KF50-12.60"	75.00	52.20	320.00

# KF Flanges & Fittings

## KF STRAIGHT REDUCERS



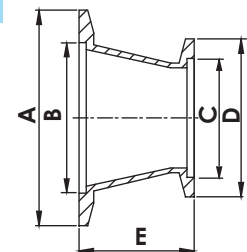
Catalogue PN	Size	A	B	C	D	E
KF-SRN-25x16	KF25 X KF16	40.00	26.20	17.20	30.00	43.20
KF-SRN-40x16	KF40 X KF16	55.00	41.20	17.20	30.00	43.20
KF-SRN-40x25	KF40 X KF25	55.00	41.20	26.20	40.00	43.20
KF-SRN-50x16	KF50 X KF16	75.00	52.20	17.20	30.00	43.20
KF-SRN-50x25	KF50X KF25	75.00	52.20	26.20	40.00	43.20
KF-SRN-50x40	KF50 X KF40	75.00	52.20	41.20	55.00	43.20



## KF CONICAL REDUCERS



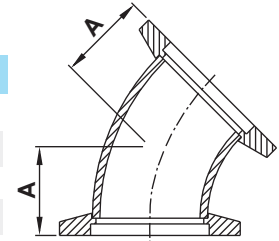
Catalogue PN	Size	A	B	C	D	E
KF-CRN-25x16	KF25xKF16	40.00	26.20	17.20	30.00	39.90
KF-CRN-40x16	KF40xKF16	55.00	41.20	17.20	30.00	39.90
KF-CRN-40x25	KF40xKF25	55.00	41.20	26.20	40.00	39.90
KF-CRN-50x16	KF50xKF16	75.00	52.20	17.20	30.00	39.90
KF-CRN-50x25	KF50xKF25	75.00	52.20	26.20	40.00	39.90
KF-CRN-50x40	KF50xKF40	75.00	52.20	41.20	55.00	39.90



**K F  
DN**

# KF Flanges & Fittings

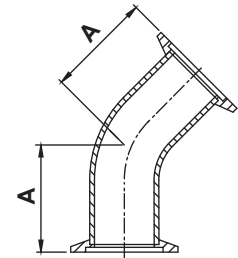
## KF 45° ELBOWS



Catalogue PN	Size	A
KF-45EL-16	KF16	15.65
KF-45EL-25	KF25	19.58
KF-45EL-40	KF40	27.47
KF-45EL-50	KF50	35.36

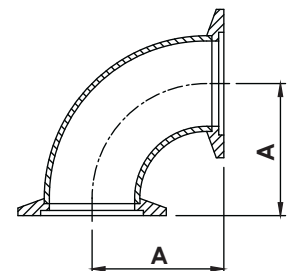
**K F  
DN**

## KF 45° ELBOWS with TANGENTS



Catalogue PN	Size	A
KF-45ELT-16	KF16	23.10
KF-45ELT-25-S	KF25-S	28.45
KF-45ELT-25	KF25	33.88
KF-45ELT-40-S	KF40-S	42.67
KF-45ELT-40	KF40	45.10
KF-45ELT-50-S	KF50-S	50.55
KF-45ELT-50	KF50	62.50

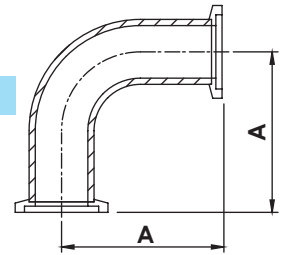
## KF 90° ELBOWS



Catalogue PN	Size	A
KF-90EL-10	KF10	31.80
KF-90EL-16	KF16	29.20
KF-90EL-25	KF25	41.90
KF-90EL-40	KF40	61.00
KF-90EL-50	KF50	80.00

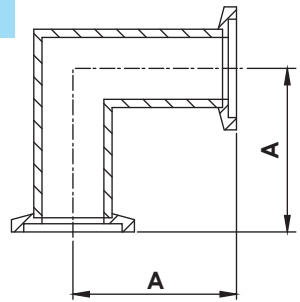
# KF Flanges & Fittings

## KF 90° ELBOWS with TANGENTS



Catalogue PN	Size	A
KF-90ELT-16	KF16	68.58
KF-90ELT-25	KF25	92.46
KF-90ELT-40	KF40	130.05
KF-90ELT-50	KF50	139.95

## KF 90° MITERED ELBOWS



Catalogue PN	Size	A
KF-MEL-16	KF16	29.21
KF-MEL-16-H	KF16-H	40.00
KF-MEL-25	KF25	50.00
KF-MEL-25-H	KF25-H	51.56
KF-MEL-40	KF40	60.96
KF-MEL-40-H	KF40-H	65.00
KF-MEL-50	KF50	69.84
KF-MEL-50-H	KF50-H	80.01

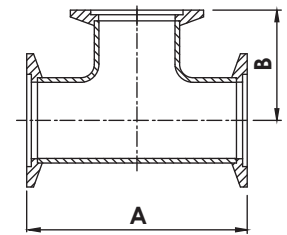
**K F  
DN**

# KF Flanges & Fittings

## KF EQUAL TEES



Catalogue PN	Size	A	B
KF-ET-10	KF10	63.50	31.75
KF-ET-16	KF16	58.40	29.20
KF-ET-16-H	KF16-H	80.00	40.00
KF-ET-25	KF25	100.00	50.00
KF-ET-25-H	KF25-H	102.80	51.40
KF-ET-40	KF40	122.00	61.00
KF-ET-40-H	KF40-H	130.00	65.00
KF-ET-50	KF50	140.00	70.00
KF-ET-50-H	KF50-H	160.00	80.00

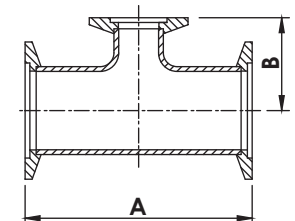


**K F  
DN**

## KF REDUCING TEES



Catalogue PN	Size	A	B
KF-RT-25x16	KF25 x KF16	100.00	27.80
KF-RT-25x16-1	KF25 x KF16	100.00	43.20
KF-RT-25x16-2	KF25 x KF16	103.10	32.25
KF-RT-40x16	KF40 x KF16	121.90	38.85
KF-RT-40x16-1	KF40 x KF16	130.00	34.00
KF-RT-40x16-2	KF40 x KF16	130.00	49.50
KF-RT-40x25	KF40 x KF25	121.90	57.91
KF-RT-40x25-1	KF40 x KF25	130.00	56.40
KF-RT-50x16	KF50 x KF16	140.00	40.10
KF-RT-50x16-1	KF50 x KF16	140.00	55.90
KF-RT-50x16-2	KF50 x KF16	160.00	45.20
KF-RT-50x25	KF50 x KF25	140.00	62.70
KF-RT-50x40	KF50 x KF40	140.00	71.40
KF-RT-50x40-1	KF50 x KF40	160.00	67.31

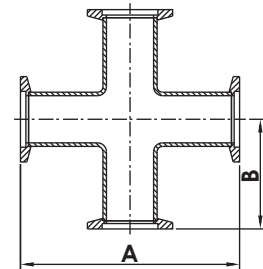


# KF Flanges & Fittings

## KF 4-WAY CROSSES



Catalogue PN	Size	A	B
KF-4C-10	KF10	63.50	31.75
KF-4C-16	KF16	58.40	29.20
KF-4C-16-H	KF16-H	80.00	40.00
KF-4C-25	KF25	100.00	50.00
KF-4C-25-H	KF25-H	102.80	51.40
KF-4C-40	KF40	122.00	61.00
KF-4C-40-H	KF40-H	130.00	65.00
KF-4C-50	KF50	140.00	70.00
KF-4C-50-H	KF50-H	160.00	80.00

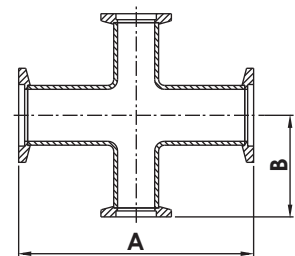


**K F  
DN**

## KF REDUCING 4-WAY CROSSES



Catalogue PN	Size	A	B
KF-4RC-25x16	KF25 x KF16	100.00	43.20
KF-4RC-25x16-H	KF25 x KF16-H	103.12	32.26
KF-4RC-40x16	KF40 x KF16	121.92	38.86
KF-4RC-40x16-H	KF40 x KF16-H	130.00	49.50
KF-4RC-40x25	KF40 x KF25	121.92	57.91
KF-4RC-40x25-H	KF40 x KF25-H	130.00	56.40
KF-4RC-50x16	KF50 x KF16	140.00	55.90
KF-4RC-50x16-H	KF50 x KF16-H	160.02	45.21
KF-4RC-50x25-H	KF50 x KF25-H	140.00	62.70
KF-4RC-50x40	KF50 x KF40	140.00	71.40
KF-4RC-50x40-H	KF50 x KF40-H	160.02	67.31



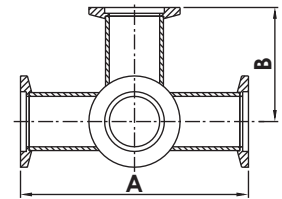


# KF Flanges & Fittings

## KF 5-WAY CROSSES



Catalogue PN	Size	A	B
KF-5C-16	KF16	80.00	40.00
KF-5C-25	KF25	100.00	50.00
KF-5C-40	KF40	130.00	65.00
KF-5C-50	KF50	140.00	70.00

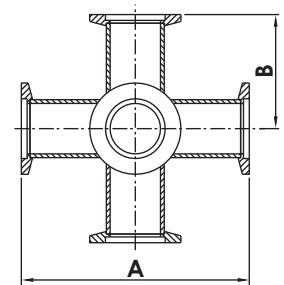


**K F  
DN**

## KF 6-WAY CROSSES

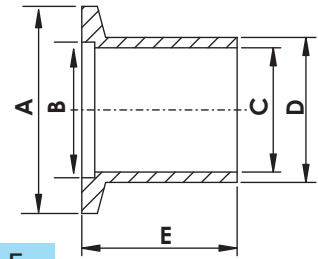


Catalogue PN	Size	A	B
KF-6C-16	KF16	80.00	40.00
KF-6C-25	KF25	100.00	50.00
KF-6C-40	KF40	130.00	65.00
KF-6C-50	KF50	140.00	70.00



# DN Flanges & Fittings

## DN BUTT WELD STUBS, LENGTH 26MM



Catalogue PN	Size	A	B	C	D	E
DN-BW26-10	DN10	30.00	12.20	10.00	14.00	26.00
DN-BW26-16	DN16	30.00	17.20	16.00	20.00	26.00
DN-BW26-20	DN20	40.00	22.20	21.00	25.00	26.00
DN-BW26-25	DN25	40.00	26.20	24.00	28.00	26.00
DN-BW26-32	DN32	55.00	34.20	34.00	38.00	26.00
DN-BW26-40	DN40	55.00	41.20	40.50	44.50	26.00
DN-BW26-50	DN50	75.00	52.20	50.60	57.00	26.00

## DN BUTT WELD STUBS, LENGTH 30MM

Catalogue PN	Size	A	B	C	D	E
DN-BW30-10	DN10	30.00	12.20	10.00	14.00	30.00
DN-BW30-16	DN16	30.00	17.20	16.00	20.00	30.00
DN-BW30-25	DN25	40.00	26.20	24.00	28.00	30.00
DN-BW30-40	DN40	55.00	41.20	40.50	44.50	30.00
DN-BW30-50	DN50	75.00	52.20	50.60	57.00	30.00

## DN BUTT WELD STUBS, LENGTH 55MM

Catalogue PN	Size	A	B	C	D	E
DN-BW55-10	DN10	30.00	12.20	10.00	14.00	55.00
DN-BW55-16	DN16	30.00	17.20	16.00	20.00	55.00
DN-BW55-25	DN25	40.00	26.20	24.00	28.00	55.00
DN-BW55-40	DN40	55.00	41.20	40.50	44.50	55.00
DN-BW55-50	DN50	75.00	52.20	50.60	57.00	55.00

## DN BUTT WELD STUBS, LENGTH 70MM

Catalogue PN	Size	A	B	C	D	E
DN-BW70-10	DN10	30.00	12.20	10.00	14.00	70.00
DN-BW70-16	DN16	30.00	17.20	16.00	20.00	70.00
DN-BW70-25	DN25	40.00	26.20	24.00	28.00	70.00
DN-BW70-40	DN40	55.00	41.20	40.50	44.50	70.00
DN-BW70-50	DN50	75.00	52.20	50.60	57.00	70.00

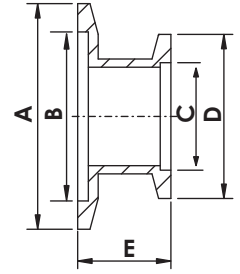
**K F  
DN**

# DN Flanges & Fittings



## DN STRAIGHT REDUCERS, SHORT

Catalogue PN	Size	A	B	C	D	E
DN-SRNS-16x10	DN16xDN10	30.00	17.20	12.20	30.00	28.00
DN-SRNS-25x10	DN25xDN10	40.00	26.20	12.20	30.00	28.00
DN-SRNS-25x16	DN25xDN16	40.00	26.20	17.20	30.00	28.00
DN-SRNS-40x10	DN40xDN10	55.00	41.20	12.20	30.00	28.00
DN-SRNS-40x16	DN40xDN16	55.00	41.20	17.20	30.00	28.00
DN-SRNS-40x25	DN40xDN25	55.00	41.20	26.20	40.00	28.00
DN-SRNS-50x16	DN50xDN16	75.00	52.20	17.20	30.00	28.00
DN-SRNS-50x25	DN50xDN25	75.00	52.20	26.20	40.00	28.00
DN-SRNS-50x40	DN50xDN40	75.00	52.20	41.20	55.00	28.00

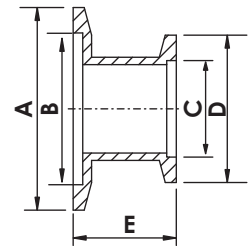


**K F  
DN**



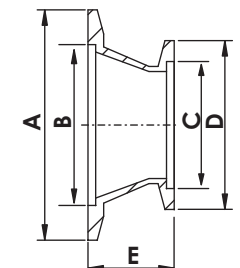
## DN STRAIGHT REDUCERS, LONG

Catalogue PN	Size	A	B	C	D	E
DN-SRNL-25x16	DN25xDN16	40.00	26.20	17.20	30.00	40.00
DN-SRNL-40x16	DN40xDN16	55.00	41.20	17.20	30.00	40.00
DN-SRNL-40x25	DN40xDN25	55.00	41.20	26.20	40.00	40.00
DN-SRNL-50x16	DN50xDN16	75.00	52.20	17.20	30.00	40.00
DN-SRNL-50x25	DN50xDN25	75.00	52.20	26.20	40.00	40.00
DN-SRNL-50x40	DN50xDN40	75.00	52.20	41.20	55.00	40.00



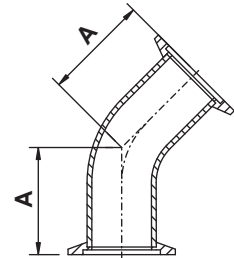
## DN CONICAL REDUCERS

Catalogue PN	Size	A	B	C	D	E
DN-CRN-25x16	DN25xDN16	40.00	26.20	17.20	30.00	28.00
DN-CRN-40x16	DN40xDN16	55.00	41.20	17.20	30.00	28.00
DN-CRN-40x25	DN40xDN25	55.00	41.20	26.20	40.00	28.00
DN-CRN-50x16	DN50xDN16	75.00	52.40	17.20	30.00	28.00
DN-CRN-50x25	DN50xDN25	75.00	52.40	26.20	40.00	28.00
DN-CRN-50x40	DN50xDN40	75.00	52.40	41.20	55.00	28.00



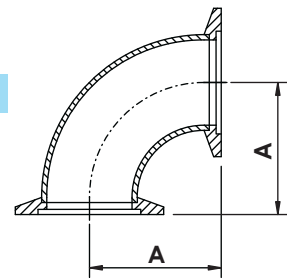
# DN Flanges & Fittings

## DN 45° ELBOWS WITH TANGENTS



Catalogue PN	Size	A	Tube Size
DN-45ELT-10	DN10	30.00	14.0 X 2.0mmt
DN-45ELT-16	DN16	26.00	20.0 X 1.5mmt
DN-45ELT-25	DN25	32.00	28.0 X 1.5mmt
DN-45ELT-40	DN40	40.00	44.5 X 2.0mmt
DN-45ELT-50	DN50	51.00	54.0 X 2.0mmt

## DN 90° ELBOWS



Catalogue PN	Size	A	Tube Size
DN-90EL-10	DN10	30.00	14.0 x 2.0mmt
DN-90EL-16	DN16	40.00	20.0 x 1.5mmt
DN-90EL-25	DN25	50.00	28.0 x 1.5mmt
DN-90EL-40	DN40	65.00	44.5 x 2.0mmt
DN-90EL-50	DN50	70.00	54.0 x 2.0mmt

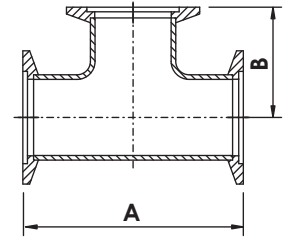
**K F  
DN**

# DN Flanges & Fittings

## DN EQUAL TEES



Catalogue PN	Size	A	B	Tube Size
DN-ET-10	DN10	60.00	30.00	14.0 x 2.0mmt
DN-ET-16	DN16	80.00	40.00	20.0 x 1.5mmt
DN-ET-25	DN25	100.00	50.00	28.0 x 1.5mmt
DN-ET-40	DN40	130.00	65.00	44.5 x 2.0mmt
DN-ET-50	DN50	140.00	70.00	54.0 x 2.0mmt
DN-ET-57	DN57	140.00	70.00	57.0 x 3.0mmt

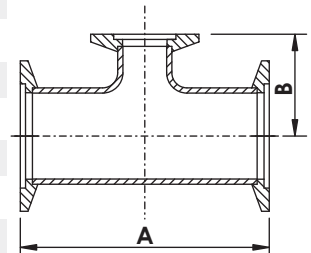


**K F  
DN**

## DN REDUCING TEES



Catalogue PN	Size	A	B	Tube Size 1	Tube Size 2
DN-RT-25x10	DN25 x DN10	100.00	40.00	28.0 x 1.5mmt	14.0 x 2.0mmt
DN-RT-25x16	DN25 x DN16	100.00	40.00	28.0 x 1.5mmt	20.0 x 1.5mmt
DN-RT-40x16	DN40 x DN16	130.00	40.00	44.5 x 2.0mmt	20.0 x 1.5mmt
DN-RT-40x25	DN40 x DN25	130.00	50.00	44.5 x 2.0mmt	28.0 x 1.5mmt
DN-RT-50x16	DN50 x DN16	140.00	50.00	20.0 x 1.5mmt	20.0 x 1.5mmt
DN-RT-50x25	DN50 x DN25	140.00	65.00	54.0 x 2.0mmt	28.0 x 1.5mmt
DN-RT-50x40	DN50 x DN40	140.00	65.00	54.2 x 2.0mmt	44.5 x 2.0mmt
DN-RT-57x16	DN57 x DN16	140.00	50.00	57.0 x 3.0mmt	20.0 x 1.5mmt
DN-RT-57x25	DN57 x DN25	140.00	65.00	57.0 x 3.0mmt	28.0 x 1.5mmt
DN-RT-57x40	DN57 x DN40	140.00	65.00	57.0 x 3.0mmt	44.5 x 2.0mmt

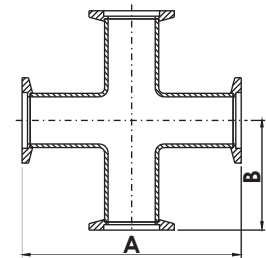


# DN Flanges & Fittings

## DN 4-WAY CROSSES



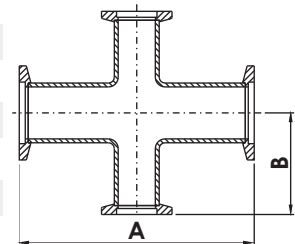
Catalogue PN	Size	A	B	Tube Size
DN-4C-10	DN10	60.00	30.00	14.0 x 2.0mmt
DN-4C-16	DN16	80.00	40.00	20.0 x 1.5mmt
DN-4C-25	DN25	100.00	50.00	28.0 x 1.5mmt
DN-4C-40	DN40	130.00	65.00	44.5 x 2.0mmt
DN-4C-50	DN50	140.00	70.00	54.0 x 2.0mmt
DN-4C-57	DN57	140.00	70.00	57.0 x 3.0mmt



## DN REDUCING 4-WAY CROSSES



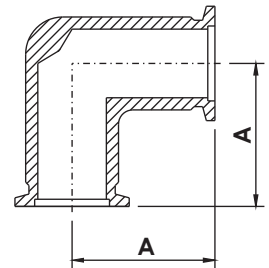
Catalogue PN	Size	A	B	Tube Size 1	Tube Size 2
DN-4RC-25x10	DN25 x DN10	100.00	40.00	28.0 x 1.5mmt	14.0 x 2.0mmt
DN-4RC-25x16	DN25 x DN16	100.00	40.00	28.0 x 1.5mmt	20.0 x 1.5mmt
DN-4RC-40x10	DN40 x DN10	130.00	40.00	44.5 x 2.0mmt	14.0 x 2.0mmt
DN-4RC-40x16	DN40 x DN16	130.00	40.00	44.5 x 2.0mmt	20.0 x 1.5mmt
DN-4RC-40x25	DN40 x DN25	130.00	50.00	44.5 x 2.0mmt	28.0 x 1.5mmt
DN-4RC-50x16	DN50 x DN16	140.00	50.00	54.0 x 2.0mmt	20.0 x 1.5mmt
DN-4RC-50x25	DN50 x DN25	140.00	50.00	54.0 x 2.0mmt	28.0 x 1.5mmt
DN-4RC-50x40	DN50 x DN40	140.00	65.00	54.0 x 2.0mmt	44.5 x 2.0mmt
DN-4RC-57x16	DN57 x DN16	140.00	50.00	57.0 x 3.0mmt	20.0 x 1.5mmt
DN-4RC-57x25	DN57 x DN25	140.00	50.00	57.0 x 3.0mmt	28.0 x 1.5mmt
DN-4RC-57x40	DN57 x DN40	140.00	65.00	57.0 x 3.0mmt	44.5 x 2.0mmt



**K F  
DN**

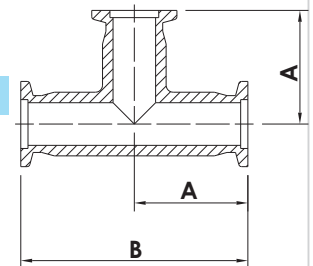
# DN Machined Fittings

## DN 90° ELBOW, MACHINED



Catalogue PN	Size	A
DN-90ELMA-16-AL	KF16	40.00
DN-90ELMA-25-AL	KF25	50.00
DN-90ELMA-40-AL	KF40	65.00
DN-90ELMA-50-AL	KF50	70.00

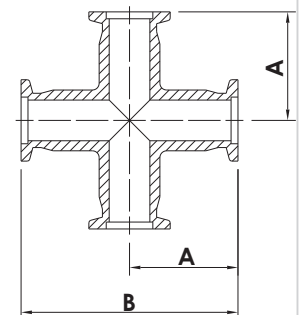
## DN EQUAL TEES, MACHINED



**K F  
DN**

Catalogue PN	Size	A	B
DN-ETMA-16-AL	KF16	40.00	80.00
DN-ETMA-25-AL	KF25	50.00	100.00
DN-ETMA-40-AL	KF40	65.00	130.00
DN-ETMA-50-AL	KF50	70.00	140.00

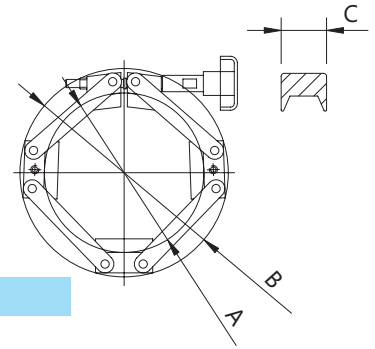
## DN 4-WAY CROSSES, MACHINED



Catalogue PN	Size	A	B
DN-4CMA-16-AL	KF16	40.00	80.00
DN-4CMA-25-AL	KF25	50.00	100.00
DN-4CMA-40-AL	KF40	65.00	130.00
DN-4CMA-50-AL	KF50	70.00	140.00

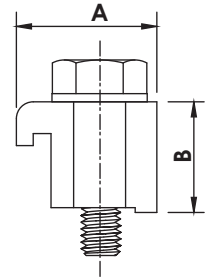
# ISO Flanges & Fittings

## NW CHAIN CLAMPS



Catalogue PN	Size	A	B	C
NW-CC-63	NW63	98.00	134.40	30.00
NW-CC-80	NW80	117.10	153.00	30.00
NW-CC-100	NW100	136.50	171.68	30.00
NW-CC-160	NW160	197.90	231.70	30.00

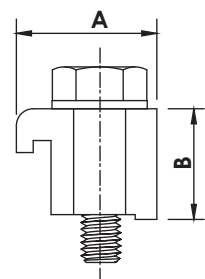
## ISO-K SINGLE CLAWS



Catalogue PN	Size	A	B	Thread Size
ISOK-SC-63100M	ISO63-ISO100	24.10	22.50	M8 x 35L
ISOK-SC-160250M	ISO160-ISO250	27.50	23.50	M10 x 35L
ISOK-SC-320500M	ISO320-ISO500	30.00	30.00	M12 x 50L
ISOK-SC-630M	ISO630	30.00	35.00	M12 x 50L

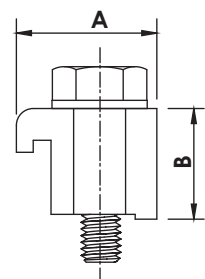
ISO

## ISO-K SINGLE CLAWS



Catalogue PN	Size	A	B	Thread Size
ISOK-SC-63100M-AL	ISO63-ISO100	24.10	22.50	M8 x 35L
ISOK-SC-63100-AL	ISO63-ISO100	24.10	22.50	5/16"-18
ISOK-SC-160250M-AL	ISO160-ISO250	27.50	23.50	M10 x 35L
ISOK-SC-160250-AL	ISO160-ISO250	27.50	23.50	5/16"-18L

## ISO-K SINGLE CLAWS

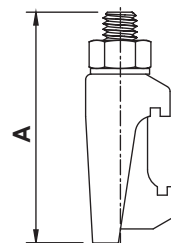


Catalogue PN	Size	A	B	Thread Size
ISOK-SC-63100M-ZP	ISO60-ISO100	24.10	22.50	M8 x 35L
ISOK-SC-160250M-ZP	ISO160-ISO250	27.50	23.50	M10 x 35L
ISOK-SC-320250M-ZP	ISO320-ISO500	30.00	30.00	M12 x 50L



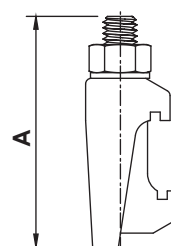
# ISO Flanges & Fittings

## ISO-K DOUBLE CLAWS



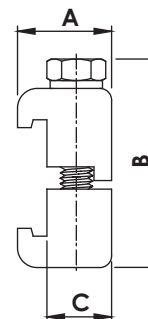
Catalogue PN	Size	A	Bolt Size
ISOK-DC-63250M	ISO63-ISO250	60.00	M10
ISOK-DC-320500M	ISO320-ISO500	76.50	M12

## ISO-K DOUBLE CLAWS



Catalogue PN	Size	A	Bolt Size
ISOK-DC-63250M-ZP	ISO63-ISO250	60.00	M10
ISOK-DC-320500M-ZP	ISO320-ISO500	76.50	M12

## ISO-K DOUBLE CLAWS

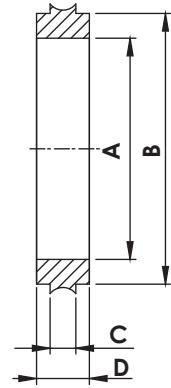


Catalogue PN	Size	A	B	C	Thread Size
ISOK-DC-63100M-AL	ISO63-ISO100	24.00	50.00	16.50	M8x45L
ISOK-DC-63100-AL	ISO63-ISO100	24.00	50.00	16.50	5/16"-18
ISOK-DC-160250M-AL	ISO160-ISO250	27.50	51.60	20.00	M10x45L
ISOK-DC-160250-AL	ISO160-ISO250	27.50	51.60	20.00	5/16"-18



# ISO Flanges & Fittings

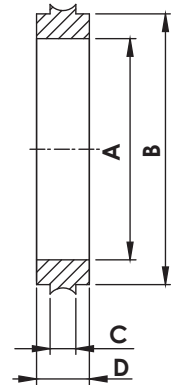
## ISO CENTERING RINGS



Catalogue PN	Size	A	B	C	D
ISO-CR-63	ISO63	68.00	70.00	3.90	8
ISO-CR-80	ISO80	81.00	83.00	3.90	8
ISO-CR-100	ISO100	100.00	102.00	3.90	8
ISO-CR-160	ISO160	151.00	153.00	3.90	8
ISO-CR-200	ISO200	210.00	213.00	3.90	8
ISO-CR-250	ISO250	256.00	261.00	3.90	8
ISO-CR-320	ISO320	311.15	316.48	5.50	14

NOTE: 316/L MATERIAL AVAILABLE ON REQUEST.

## ISO CENTERING RINGS, ALUMINUM



**ISO**

Catalogue PN	Size	A	B	C	D
ISO-CR-63-AL	ISO63	68.00	70.00	3.90	8
ISO-CR-80-AL	ISO80	81.00	83.00	3.90	8
ISO-CR-100-AL	ISO100	100.00	102.00	3.90	8
ISO-CR-160-AL	ISO160	151.00	153.00	3.90	8
ISO-CR-200-AL	ISO200	210.00	213.00	3.90	8
ISO-CR-250-AL	ISO250	256.00	261.00	3.90	8
ISO-CR-320-AL	ISO320	311.15	316.48	5.50	14

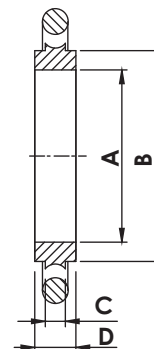
# ISO Flanges & Fittings

## ISO 中心圈O型环

### ISO CENTERING RINGS with O-RINGS

材质：不锈钢304/L

O型环：FKM



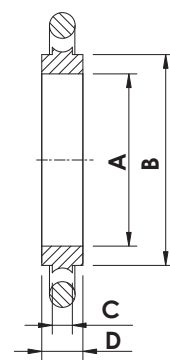
Catalogue PN	Size	A	B	C	D
ISO-CRO-63	ISO63	68.00	70.00	3.90	8
ISO-CRO-80	ISO80	81.00	83.00	3.90	8
ISO-CRO-100	ISO100	100.00	102.00	3.90	8
ISO-CRO-160	ISO160	151.00	153.00	3.90	8
ISO-CRO-200	ISO200	210.00	213.00	3.90	8
ISO-CRO-250	ISO250	256.00	261.00	3.90	8
ISO-CRO-320	ISO320	311.15	316.48	5.50	14

## ISO 中心圈O型环

### ISO CENTERING RINGS with O-RINGS, ALUMINUM

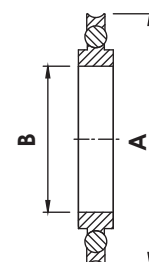
材质：镁铝合金AL6061

O型环：FKM



Catalogue PN	Size	A	B	C	D
ISO-CRO-63-AL	ISO63	68.00	70.00	3.90	8
ISO-CRO-80-AL	ISO80	81.00	83.00	3.90	8
ISO-CRO-100-AL	ISO100	100.00	102.00	3.90	8
ISO-CRO-160-AL	ISO160	151.00	153.00	3.90	8
ISO-CRO-200-AL	ISO200	210.00	213.00	3.90	8
ISO-CRO-250-AL	ISO250	256.00	261.00	3.90	8
ISO-CRO-320-AL	ISO320	311.15	316.48	5.50	14

## ISO CENTERING RINGS with O-RINGS and SPACERS

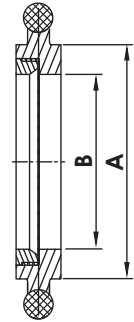


Catalogue PN	Size	A	B
ISO-CROS-63	ISO63	94.00	68.00
ISO-CROS-80	ISO80	109.00	81.00
ISO-CROS-100	ISO100	128.00	100.00
ISO-CROS-160	ISO160	179.00	151.00
ISO-CROS-200	ISO200	239.00	210.00
ISO-CROS-250	ISO250	287.00	256.00
ISO-CROS-320	ISO320	346.33	311.15
ISO-CROS-400	ISO400	428.80	392.93

ISO

# ISO Flanges & Fittings

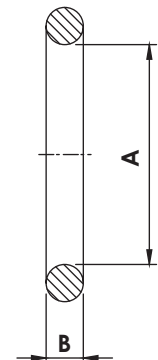
## ISO SCREENED CENTERING RINGS with O-RINGS



Catalogue PN	Size	A	B
ISO-CROSC-100	ISO100	102.00	92.00
ISO-CROSC-160	ISO160	153.00	139.70
ISO-CROSC-200	ISO200	213.00	206.80

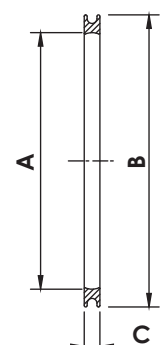
ISO

## ISO REPLACEMENT O-RINGS



Catalogue PN	Size	A	B
ISO-RO-63	ISO63	72.39	5.33
ISO-RO-80	ISO80	85.09	5.33
ISO-RO-100	ISO100	104.14	5.33
ISO-RO-160	ISO160	151.77	5.33
ISO-RO-200	ISO200	215.27	5.33
ISO-RO-250	ISO250	266.07	5.33
ISO-RO-320	ISO320	316.87	6.99
ISO-RO-400	ISO400	393.07	6.99

## ISO SPACER RINGS



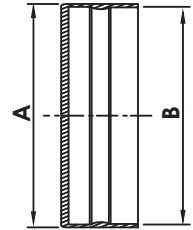
Catalogue PN	Size	A	B	C
ISO-OR-63	ISO63	88.80	98.00	3.75
ISO-OR-80	ISO80	101.80	111.00	3.75
ISO-OR-100	ISO100	120.80	130.00	3.75
ISO-OR-160	ISO160	170.10	179.30	3.75
ISO-OR-200	ISO200	232.10	241.30	3.75
ISO-OR-250	ISO250	282.10	291.30	3.75
ISO-OR-320	ISO320	335.50	344.00	5.59
ISO-OR-400	ISO400	420.30	428.80	5.59

# ISO Flanges & Fittings

## ISO-K FLANGE PROTECTION CAPS, PLASTIC



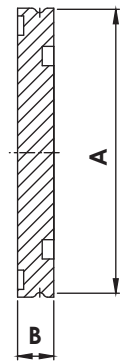
Catalogue PN	Size	A	B
ISOK-PC-63	ISO63	97.8	95.0
ISOK-PC-80	ISO80	113.0	110.0
ISOK-PC-100	ISO100	133.0	130.0
ISOK-PC-160	ISO160	183.0	180.0
ISOK-PC-200	ISO200	242.0	240.0
ISOK-PC-250	ISO250	293.4	290.0
ISOK-PC-320	ISO320	373.9	370.5
ISOK-PC-400	ISO400	454.2	450.8



## ISO-K BLANK FLANGES



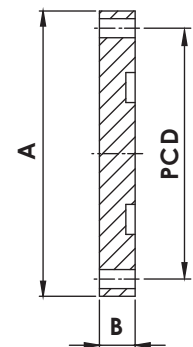
Catalogue PN	Size	A	B
ISOK-BL-63	ISO63	95.00	11.90
ISOK-BL-80	ISO80	110.00	11.90
ISOK-BL-100	ISO100	130.00	11.90
ISOK-BL-160	ISO160	180.00	11.90
ISOK-BL-200	ISO200	240.00	12.00
ISOK-BL-250	ISO250	290.00	12.00
ISOK-BL-320	ISO320	370.00	17.00



## ISO-F BLANK FLANGES

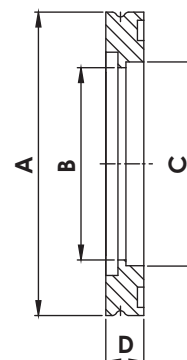


Catalogue PN	Size	A	B	Bolt Holes	PCD
ISOF-BL-63	ISO63	130.00	11.90	4	110
ISOF-BL-80	ISO80	145.00	11.90	8	125
ISOF-BL-100	ISO100	165.00	11.90	8	145
ISOF-BL-160	ISO160	225.00	16.00	8	200
ISOF-BL-200	ISO200	285.00	16.00	12	260
ISOF-BL-250	ISO250	335.00	16.00	12	310
ISOF-BL-320	ISO320	425.00	20.00	12	395



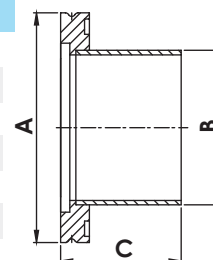
# ISO Flanges & Fittings

## ISO-K BORED FLANGES



Catalogue PN	Size	A	B	C	D
ISOK-BF-63	ISO63	95.00	60.20	63.80	11.90
ISOK-BF-80	ISO80	110.00	72.90	76.50	11.90
ISOK-BF-100	ISO100	130.00	98.30	101.90	11.90
ISOK-BF-160	ISO160	180.00	149.10	152.90	11.90
ISOK-BF-200	ISO200	240.00	197.10	203.70	11.90
ISOK-BF-250	ISO250	290.00	247.70	254.50	11.90
ISOK-BF-320	ISO320	370.00	296.82	305.56	17.00

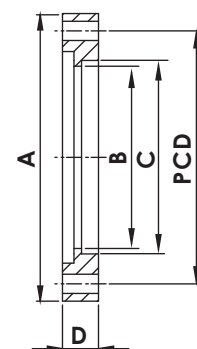
## ISO-K HALF NIPPLES



Catalogue PN	Size	A	B	C
ISOK-HN-63	ISO63	95.00	63.50	100.00
ISOK-HN-80	ISO80	110.00	76.20	100.00
ISOK-HN-100	ISO100	130.00	101.60	100.00
ISOK-HN-160	ISO160	180.00	152.40	100.00
ISOK-HN-200	ISO200	240.00	203.20	100.00
ISOK-HN-250	ISO250	290.00	254.00	100.00
ISOK-HN-320	ISO320	370.00	304.80	100.00

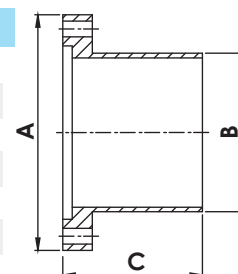
ISO

## ISO-F BORED FLANGES



Catalogue PN	Size	A	B	C	D	PCD
ISOF-BF-63	ISO63	130.00	61.90	63.80	11.90	110.00
ISOF-BF-80	ISO80	145.00	74.60	76.50	11.90	125.00
ISOF-BF-100	ISO100	165.10	99.30	101.92	11.90	145.00
ISOF-BF-160	ISO160	225.00	149.20	152.90	16.00	200.00
ISOF-BF-200	ISO200	285.00	200.00	203.70	16.00	260.00
ISOF-BF-250	ISO250	335.00	250.80	254.50	16.00	310.00
ISOF-BF-320	ISO320	425.00	318.00	324.40	20.00	395.00

## ISO-F HALF NIPPLES



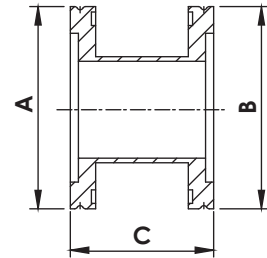
Catalogue PN	Size	A	B	C
ISOF-HN-63	ISO63	130.00	63.50	100.00
ISOF-HN-80	ISO80	145.00	76.20	100.00
ISOF-HN-100	ISO100	165.10	101.60	100.00
ISOF-HN-160	ISO160	225.00	152.40	100.00
ISOF-HN-200	ISO200	285.00	203.20	100.00
ISOF-HN-250	ISO250	335.00	254.00	100.00
ISOF-HN-320	ISO320	425.00	304.80	100.00

# ISO Flanges & Fittings

## ISO-K FULL NIPPLES



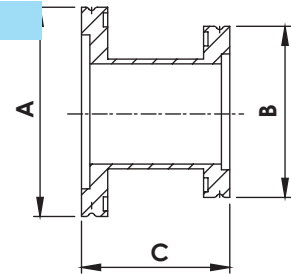
Catalogue PN	Size	A	B	C
ISOK-FN-63	ISO63	ISO63	ISO63	165.10
ISOK-FN-63-1	ISO63	ISO63	ISO63	175.80
ISOK-FN-80	ISO80	ISO80	ISO80	196.10
ISOK-FN-80-1	ISO80	ISO80	ISO80	177.80
ISOK-FN-100	ISO100	ISO100	ISO100	209.80
ISOK-FN-100-1	ISO100	ISO100	ISO100	215.90
ISOK-FN-160	ISO160	ISO160	ISO160	273.30
ISOK-FN-160-1	ISO160	ISO160	ISO160	275.80



## ISO-K REDUCER NIPPLES



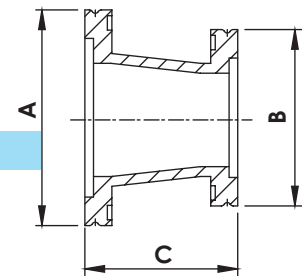
Catalogue PN	Size	A	B	C
ISOK-SRN-80x63	ISO80x63	ISO80	ISO63	76.20
ISOK-SRN-100x63	ISO100x63	ISO100	ISO63	76.20
ISOK-SRN-100x80	ISO100x80	ISO100	ISO80	76.20
ISOK-SRN-160x63	ISO160x63	ISO160	ISO63	76.20
ISOK-SRN-160x80	ISO160x80	ISO160	ISO80	76.20
ISOK-SRN-160x100	ISO160x100	ISO160	ISO100	76.20



## ISO-K CONICAL REDUCERS



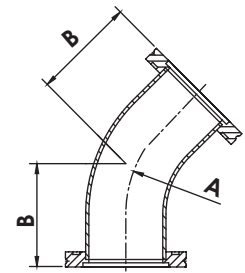
Catalogue PN	Size	A	B	C
ISOK-CRN-80x63	ISO80x63	ISO80	ISO63	104.70
ISOK-CRN-100x63	ISO100x63	ISO100	ISO63	104.70
ISOK-CRN-100x80	ISO100x80	ISO100	ISO80	104.70



**ISO**

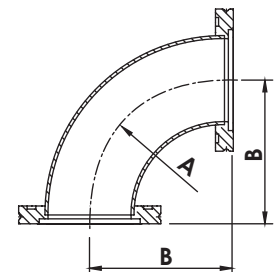
# ISO Flanges & Fittings

## K 45° ELBOWS



Catalogue PN	Size	A	B
ISOK-45EL-63	ISO63	95.25	82.30
ISOK-45EL-80	ISO80	114.30	100.00
ISOK-45EL-100	ISO100	152.40	128.50

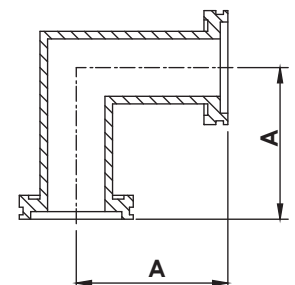
## ISO-K 90° ELBOWS



ISO

Catalogue PN	Size	A	B
ISOK-90EL-63	ISO63	95.25	101.60
ISOK-90EL-80	ISO80	114.30	120.60
ISOK-90EL-100	ISO100	152.40	158.70

## ISO-K 90° MITERED ELBOWS



Catalogue PN	Size	A
ISOK-90MEL-63	ISO63	82.60
ISOK-90MEL-63-1	ISO63-H	87.93
ISOK-90MEL-80	ISO80	88.90
ISOK-90MEL-80-1	ISO80-H	108.00
ISOK-90MEL-100	ISO100	104.90
ISOK-90MEL-100-1	ISO100-H	108.00
ISOK-90MEL-160	ISO160	138.00
ISOK-90MEL-160-1	ISO160-H	160.20

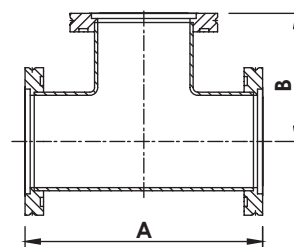


# ISO Flanges & Fittings

## ISO-K EQUAL TEES



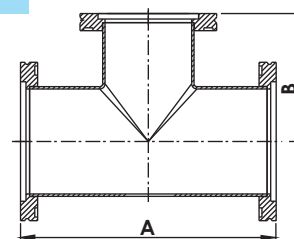
Catalogue PN	Size	A	B
ISOK-ET-63	ISO63	165.00	82.50
ISOK-ET-63-1	ISO63-H	176.00	88.00
ISOK-ET-80	ISO80	177.80	88.90
ISOK-ET-80-1	ISO80-H	196.00	98.00
ISOK-ET-100	ISO100	209.40	104.70
ISOK-ET-100-1	ISO100-H	216.00	108.00
ISOK-ET-160	ISO160	266.60	133.30



## ISO-K REDUCING TEES



Catalogue PN	Size	A	B
ISOK-RT-80x63	ISO80xISO63	177.70	88.90
ISOK-RT-100x63	ISO100xISO63	209.70	101.60
ISOK-RT-100x80	ISO100xISO80	209.70	101.60
ISOK-RT-160x63	ISO160xISO63	266.60	126.90
ISOK-RT-160x80	ISO160xISO80	266.60	126.90
ISOK-RT-160x100	ISO160xISO100	266.60	130.30

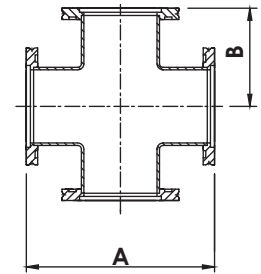


# ISO Flanges & Fittings

## ISO-K 4-WAY CROSSES



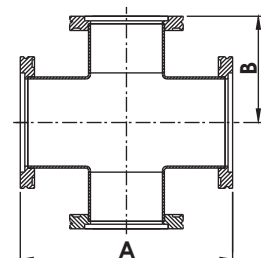
Catalogue PN	Size	A	B
ISOK-4C-63	ISO63	165.00	82.50
ISOK-4C-80	ISO80	177.80	88.90
ISOK-4C-80-1	ISO80-H	196.00	98.00
ISOK-4C-100	ISO100	209.40	104.70
ISOK-4C-100-1	ISO100-H	216.00	108.00
ISOK-4C-160	ISO160	266.60	133.30



## ISO-K 4-WAY REDUCING CROSSES



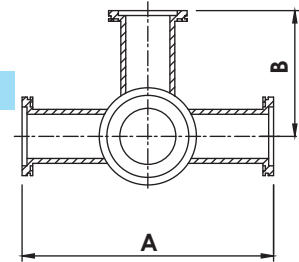
Catalogue PN	Size	A	B
ISOK-4RC-80x63	ISO80xISO63	177.70	88.85
ISOK-4RC-100x63	ISO100xISO63	209.70	101.55
ISOK-4RC-100x80	ISO100xISO80	209.70	101.55
ISOK-4RC-160x63	ISO160xISO63	266.60	126.95
ISOK-4RC-160x80	ISO160xISO80	266.60	126.95
ISOK-4RC-160x100	ISO160xISO100	266.60	130.25



**ISO**

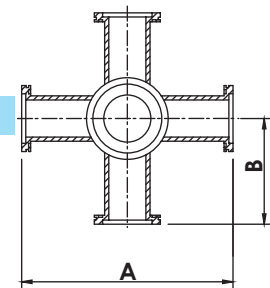
# ISO Flanges & Fittings

## ISO-K 5-WAY CROSSES



Catalogue PN	Size	A	B
ISOK-5C-63	ISO63	165.00	82.50
ISOK-5C-80	ISO80	177.80	88.90
ISOK-5C-100	ISO100	209.80	104.90
ISOK-5C-160	ISO160	266.60	133.30

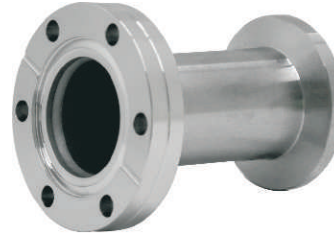
## ISO-K 6-WAY CROSSES



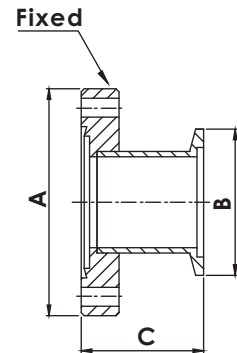
Catalogue PN	Size	A	B
ISOK-6C-63	ISO63	165.00	82.50
ISOK-6C-80	ISO80	177.80	88.90
ISOK-6C-100	ISO100	209.80	104.90
ISOK-6C-160	ISO160	266.60	133.30

# ADAPTORS

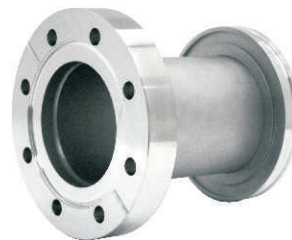
## KF to CF FLANGE ADAPTORS



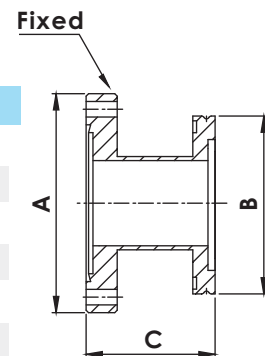
Catalogue PN	Size	A	B	C
AD-KFCF-10x133	KF10xCF1.33	CF1.33	KF 10	44.50
AD-KFCF-16x133	KF16xCF1.33	CF1.33	KF 16	44.50
AD-KFCF-16x275	KF16xCF2.75	CF2.75	KF 16	45.20
AD-KFCF-25x212	KF25xCF2.12	CF2.12	KF 25	44.50
AD-KFCF-25x275	KF25xCF2.75	CF2.75	KF 25	45.20
AD-KFCF-40x275	KF40xCF2.75	CF2.75	KF 40	45.20
AD-KFCF-40x338	KF40xCF3.38	CF3.38	KF 40	45.70
AD-KFCF-50x133	KF50xCF1.33	CF1.33	KF 50	49.50
AD-KFCF-50x275	KF50xCF2.75	CF2.75	KF 50	49.50
AD-KFCF-50x338	KF50xCF3.38	CF3.38	KF 50	45.70
AD-KFCF-50x450	KF50xCF4.50	CF4.50	KF 50	49.50



## ISO to CF FLANGE ADAPTORS



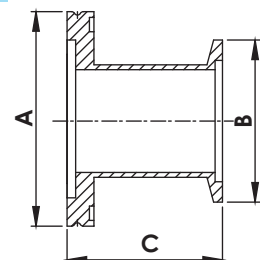
Catalogue PN	Size	A	B	C
AD-ISOCF-63x450	ISO63xCF4.50	CF4.50	ISO63	110.00
AD-ISOCF-80x462	ISO80xCF4.62	CF4.62	ISO80	110.00
AD-ISOCF-80x600	ISO80xCF6.00	CF6.00	ISO80	110.00
AD-ISOCF-100x600	ISO100xCF6.00	CF6.00	ISO100	111.00
AD-ISOCF-160x800	ISO160xCF8.00	CF8.00	ISO160	113.00
AD-ISOCF-200x1000	ISO200xCF10.00	CF10.00	ISO200	113.00



## ISO to KF FLANGE ADAPTORS



Catalogue PN	Size	A	B	C
AD-ISOKF-63x25	ISO63-KF25	ISO63	KF25	46.50
AD-ISOKF-63x40	ISO63-KF40	ISO63	KF40	46.30
AD-ISOKF-63x50	ISO63-KF50	ISO63	KF50	46.30
AD-ISOKF-80x40	ISO80-KF40	ISO80	KF40	46.30
AD-ISOKF-80x50	ISO80-KF50	ISO80	KF50	46.30
AD-ISOKF-100x40	ISO100-KF40	ISO100	KF40	46.30
AD-ISOKF-100x50	ISO100-KF50	ISO100	KF50	46.30

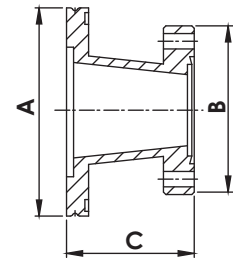


# ADAPTORS

## ISO to CF FLANGE CONICAL ADAPTORS



Catalogue PN	Size	A	B	C
AD-C-ISOCF-63x275	ISO63-CF2.75	ISO63	CF2.75	71.90
AD-C-ISOCF-63x338	ISO63-CF3.38	ISO63	CF3.38	72.30
AD-C-ISOCF-63x462	ISO63-CF4.62	ISO63	CF4.62	105.50
AD-C-ISOCF-63x600	ISO63-CF6.00	ISO63	CF6.00	109.50
AD-C-ISOCF-80x275	ISO80-CF2.75	ISO80	CF2.75	103.70
AD-C-ISOCF-80x338	ISO80-CF3.38	ISO80	CF3.38	104.10
AD-C-ISOCF-80x450	ISO80-CF4.50	ISO80	CF4.50	107.90
AD-C-ISOCF-80x600	ISO80-CF6.00	ISO80	CF6.00	109.50
AD-C-ISOCF-100x338	ISO100-CF3.38	ISO100	CF3.38	104.10
AD-C-ISOCF-100x450	ISO100-CF4.50	ISO100	CF4.50	107.90
AD-C-ISOCF-100x462	ISO100-CF4.62	ISO100	CF4.62	105.50

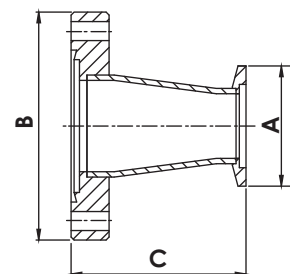


AD

## KF to CF FLANGE CONICAL ADAPTORS



Catalogue PN	Size	A	B	C
AD-C-KFCF-16x212	KF16-CF2.12	KF 16	CF2.12	42.90
AD-C-KFCF-16x275	KF16-CF2.75	KF 16	CF2.75	69.30
AD-C-KFCF-25x133	KF25-CF1.33	KF 25	CF1.33	43.15
AD-C-KFCF-25x275	KF25-CF2.75	KF 25	CF2.75	69.30
AD-C-KFCF-25x338	KF25-CF3.38	KF25	CF3.38	69.90
AD-C-KFCF-40x133	KF40-CF1.33	KF 40	CF1.33	68.55
AD-C-KFCF-40x212	KF40-CF2.12	KF 40	CF2.12	68.30
AD-C-KFCF-40x338	KF40-CF3.38	KF 40	CF3.38	69.90
AD-C-KFCF-40x450	KF40-CF4.50	KF 40	CF4.50	73.70
AD-C-KFCF-40x462	KF40-CF4.62	KF 40	CF4.62	103.10
AD-C-KFCF-50x212	KF50-CF2.12	KF 50	CF2.12	68.30
AD-C-KFCF-50x275	KF50-CF2.75	KF 50	CF2.75	69.30
AD-C-KFCF-50x450	KF50-CF4.50	KF 50	CF4.50	73.70
AD-C-KFCF-50x462	KF50-CF4.62	KF 50	CF4.62	103.10
AD-C-KFCF-50x600	KF50-CF6.00	KF 50	CF6.00	106.90

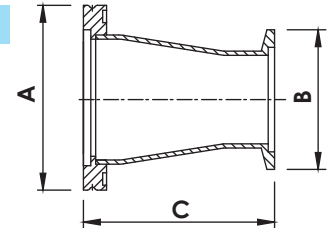


# ADAPTORS

## ISO to KF FLANGE CONICAL ADAPTORS



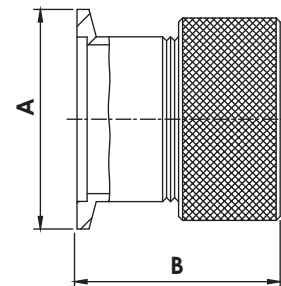
Catalogue PN	Size	A	B	C
AD-C-ISOKF-63x40	ISO63-KF40	ISO63	KF40	70.40
AD-C-ISOKF-63x50	ISO63-KF50	ISO63	KF50	70.40
AD-C-ISOKF-80x40	ISO80-KF40	ISO80	KF40	102.20
AD-C-ISOKF-80x50	ISO80-KF50	ISO80	KF50	102.20
AD-C-ISOKF-100x50	ISO100-KF50	ISO100	KF50	102.20



## KF FLANGES to QUICK COUPLINGS with VITON O-RINGS



Catalogue PN	Size	Tube Size	A	B
AD-QC-KF10x050	NW10-1/2"	1/2"	30.00	38.10
AD-QC-KF16x025	NW16-1/4"	1/4"	30.00	35.60
AD-QC-KF16x050	NW16-1/2"	1/2"	30.00	38.10
AD-QC-KF16x075	NW16-3/4"	3/4"	30.00	45.70
AD-QC-KF25x050	NW25-1/2"	1/2"	40.00	38.10
AD-QC-KF25x062	NW25-5/8"	5/8"	40.00	43.20
AD-QC-KF25x075	NW25-3/4"	3/4"	40.00	45.70
AD-QC-KF25x100	NW25-1.0"	1.0"	40.00	50.80
AD-QC-KF25x112	NW25-1 1/8"	1-1/8"	40.00	50.80
AD-QC-KF40x050	NW40-1/2"	1/2"	55.00	37.60
AD-QC-KF40x075	NW40-3/4"	3/4"	55.00	45.70
AD-QC-KF40x100	NW40-1.0"	1.0"	55.00	50.80
AD-QC-KF40x112	NW40-1 1/8"	1-1/8"	55.00	50.80
AD-QC-KF40x125	NW40-1 1/4"	1-1/4"	55.00	50.80
AD-QC-KF40x138	NW40-1 3/8"	1-3/8"	55.00	53.30
AD-QC-KF40x150	NW40-1 1/2"	1-1/2"	55.00	61.00
AD-QC-KF50x050	NW50-1/2"	1/2"	75.00	38.10
AD-QC-KF50x075	NW50-3/4"	3/4"	75.00	45.70
AD-QC-KF50x100	NW50-1.0"	1.0"	75.00	50.80
AD-QC-KF50x112	NW50-1 1/8"	1-1/8"	75.00	50.80
AD-QC-KF50x150	NW50-1 1/2"	1-1/2"	75.00	61.00
AD-QC-KF50x200	NW50-2.0"	2.0"	75.00	61.00

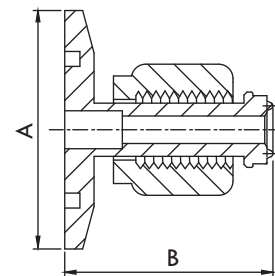


# ADAPTORS



## KF FLANGES to FEMALE VCRS

Catalogue PN	Size	A	B
AD-KFVCRF-16x025	KF16-1/4"	30.00	37.10
AD-KFVCRF-16x038	KF16-3/8"	30.00	41.90
AD-KFVCRF-16x050	KF16-1/2"	30.00	41.90
AD-KFVCRF-25x025	KF25-1/4"	40.00	37.10
AD-KFVCRF-25x038	KF25-3/8"	40.00	41.90
AD-KFVCRF-25x050	KF25-1/2"	40.00	41.90
AD-KFVCRF-25x075	KF25-3/4"	40.00	55.40
AD-KFVCRF-40x025	KF40-1/4"	55.00	37.10
AD-KFVCRF-40x038	KF40-3/8"	55.00	41.90
AD-KFVCRF-40x050	KF40-1/2"	55.00	41.90
AD-KFVCRF-40x075	KF40-3/4"	55.00	55.40
AD-KFVCRF-50x025	KF50-1/4"	75.00	37.10
AD-KFVCRF-50x038	KF50-3/8"	75.00	41.90
AD-KFVCRF-50x050	KF50-1/2"	75.00	41.90
AD-KFVCRF-50x075	KF50-3/4"	75.00	55.40

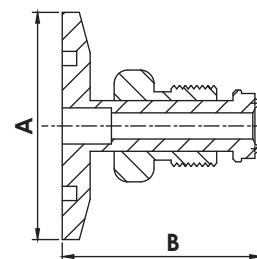


AD



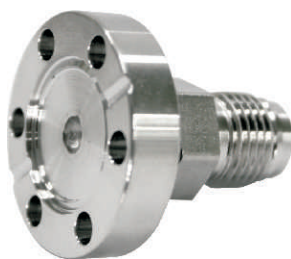
## KF FLANGES to MALE VCRS

Catalogue PN	Size	A	B
AD-KFVCRM-16x025	KF16x1/4"	30.00	37.10
AD-KFVCRM-16x038	KF16x3/8"	30.00	41.90
AD-KFVCRM-16x050	KF16x1/2"	30.00	41.90
AD-KFVCRM-25x025	KF25x1/4"	40.00	37.10
AD-KFVCRM-25x038	KF25x3/8"	40.00	41.90
AD-KFVCRM-25x050	KF25x1/2"	40.00	41.90
AD-KFVCRM-25x075	KF25x-3/4"	40.00	55.40
AD-KFVCRM-40x025	KF40x1/4"	55.00	37.10
AD-KFVCRM-40x038	KF40x3/8"	55.00	41.90
AD-KFVCRM-40x050	KF40x1/2"	55.00	41.90
AD-KFVCRM-40x075	KF40x3/4"	55.00	55.40
AD-KFVCRM-50x025	KF50x1/4"	75.00	37.10
AD-KFVCRM-50x038	KF50x3/8"	75.00	41.90
AD-KFVCRM-50x050	KF50x1/2"	75.00	41.90
AD-KFVCRM-50x075	KF50x3/4"	75.00	55.40

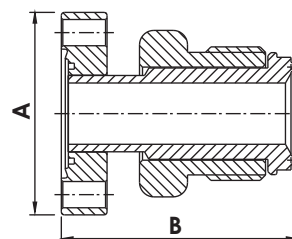


# ADAPTORS

## CF FLANGES to MALE VCRS



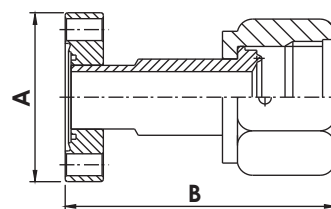
Catalogue PN	Size	A	B
AD-CFVCRM-133x025	CF16x1/4"	CF1.33"	36.30
AD-CFVCRM-133x038	CF16x3/8"	CF1.33"	39.27
AD-CFVCRM-133x050	CF16x1/2"	CF1.33"	39.27
AD-CFVCRM-275x025	CF35x1/4"	CF2.75"	38.61
AD-CFVCRM-275x038	CF35x3/8"	CF2.75"	43.41
AD-CFVCRM-275x050	CF35x1/2"	CF2.75"	43.41



## CF FLANGES to FEMALE VCRS



Catalogue PN	Size	A	B
AD-CFVCRF-133x025	CF16x1/4"	CF1.33"	36.30
AD-CFVCRF-133x038	CF16x3/8"	CF1.33"	39.27
AD-CFVCRF-133x050	CF16x1/2"	CF1.33"	39.27
AD-CFVCRF-275x025	CF35x1/4"	CF2.75"	38.61
AD-CFVCRF-275x038	CF35x3/8"	CF2.75"	43.41
AD-CFVCRF-275x050	CF35x1/2"	CF2.75"	43.41



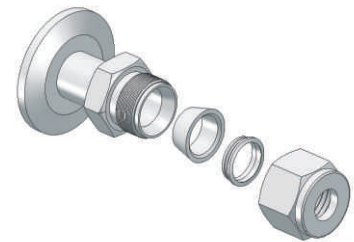
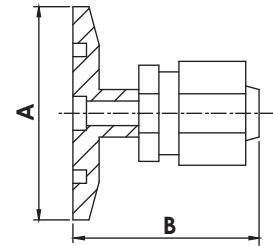


# ADAPTORS

## KF FLANGES to TWO-FERRULE FITTINGS



Catalogue PN	Size	A	B
AD-KFSWG-10x025	KF10-1/4"	30.00	33.30
AD-KFSWG-16x025	KF16-1/4"	30.00	39.40
AD-KFSWG-16x038	KF16-3/8"	30.00	41.40
AD-KFSWG-16x050	KF16-1/2"	30.00	50.00
AD-KFSWG-25x025	KF25-1/4"	40.00	39.40
AD-KFSWG-25x038	KF25-3/8"	40.00	41.40
AD-KFSWG-25x050	KF25-1/2"	40.00	50.00
AD-KFSWG-25x075	KF25-3/4"	40.00	52.80
AD-KFSWG-25x100	KF25-1.0"	40.00	65.70
AD-KFSWG-40x025	KF40-1/4"	55.00	39.40
AD-KFSWG-40x038	KF40-3/8"	55.00	41.40
AD-KFSWG-40x050	KF40-1/2"	55.00	50.00
AD-KFSWG-40x075	KF40-3/4"	55.00	52.80
AD-KFSWG-40x100	KF40-1.0"	55.00	65.70
AD-KFSWG-50x025	KF50-1/4"	75.00	39.40
AD-KFSWG-50x038	KF50-3/8"	75.00	41.40
AD-KFSWG-50x050	KF50-1/2"	75.00	50.00
AD-KFSWG-50x075	KF50-3/4"	75.00	52.80
AD-KFSWG-50x100	KF50-1.0"	75.00	65.70

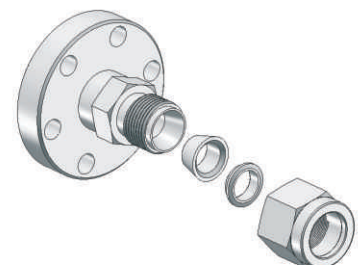
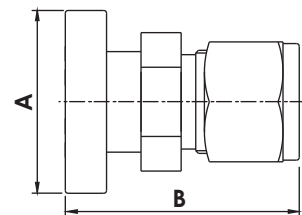


AD

## CF FLANGES to TWO-FERRULE FITTINGS



Catalogue PN	Size	A	B
AD-CFSWG-133x050	CF133-1/2"	CF1.33"	43.18
AD-CFSWG-133x025	CF133-1/4"	CF1.33"	34.80
AD-CFSWG-133x038	CF133-3/8"	CF1.33"	42.05
AD-CFSWG-275x100	CF275-1.0"	CF2.75"	67.51
AD-CFSWG-275x050	CF275-1/2"	CF2.75"	46.41
AD-CFSWG-275x025	CF275-1/4"	CF2.75"	38.81
AD-CFSWG-275x075	CF275-3/4"	CF2.75"	55.81
AD-CFSWG-275x038	CF275-3/8"	CF2.75"	42.91



# ADAPTORS

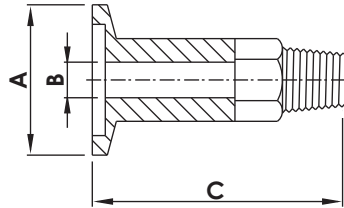


Diagram A

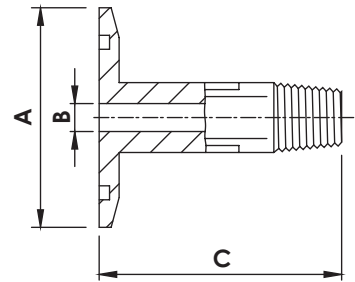
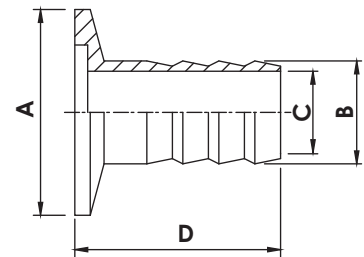


Diagram B

## KF FLANGES to MALE PIPE ADAPTORS

Catalogue PN	Size - NPT	A	B	C	Diagram
AD-KFNPTM-16x012	KF16-1/8 NPT	30.00	4.70	40.00	A
AD-KFNPTM-16x025	KF16-1/4 NPT	30.00	7.10	50.00	A
AD-KFNPTM-25x012	KF25-1/8 NPT	40.00	4.70	40.00	B
AD-KFNPTM-25x025	KF25-1/4 NPT	40.00	7.10	50.00	B
AD-KFNPTM-25x050	KF25-1/2 NPT	40.00	11.90	75.00	B
AD-KFNPTM-25x075	KF25-3/4 NPT	40.00	15.90	75.00	B
AD-KFNPTM-40x025	KF40-1/4 NPT	55.00	7.10	50.00	B
AD-KFNPTM-40x050	KF40-1/2 NPT	55.00	11.90	75.00	B
AD-KFNPTM-40x075	KF40-3/4 NPT	55.00	15.90	75.00	B
AD-KFNPTM-50x025	KF50-1/4 NPT	75.00	7.10	50.00	B
AD-KFNPTM-50x050	KF50-1/2 NPT	75.00	11.90	75.00	B
AD-KFNPTM-50x075	KF50-3/4 NPT	75.00	15.90	75.00	B

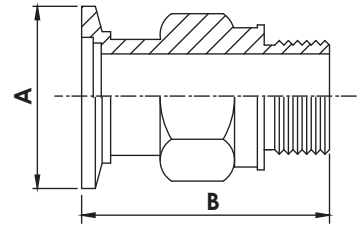
## KF FLANGES to HOSE NOZZLES



Catalogue PN	Size	A	B	C	D
AD-HS-KF10x008M	KF10-8	30.00	8.00	4.00	40.00
AD-HS-KF10x012M	KF10-12	30.00	12.00	8.00	40.00
AD-HS-KF16x008M	KF16-8	30.00	8.00	4.00	40.00
AD-HS-KF16x012M	KF16-12	30.00	12.00	8.00	40.00
AD-HS-KF25x008M	KF25-8	40.00	8.00	4.00	40.00
AD-HS-KF25x012M	KF25-12	40.00	12.00	8.00	40.00
AD-HS-KF25x016M	KF25-16	40.00	16.00	12.00	40.00
AD-HS-KF25x020M	KF25-20	40.00	20.00	16.00	40.00
AD-HS-KF40x012M	KF40-12	55.00	12.00	8.00	40.00
AD-HS-KF40x016M	KF40-16	55.00	16.00	12.00	40.00
AD-HS-KF40x020M	KF40-20	55.00	20.00	16.00	40.00
AD-HS-KF40x025M	KF40-25	55.00	25.00	20.00	40.00
AD-HS-KF50x025M	KF50-25	75.00	25.00	20.00	40.00

# ADAPTORS

## WELCH PUMP ADAPTORS



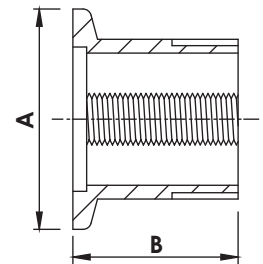
Catalogue PN	Size	A	B
AD-WP-062	KF16-WP1	30.00	45.00
AD-WP-075	KF16-WP2	30.00	65.00
AD-WP-100	KF25-WP1	40.00	70.10
AD-WP-150	KF40-WP1	55.00	65.00
AD-WP-175	KF40-WP2	55.00	65.30

AD

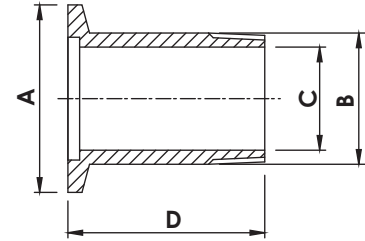
## KF FLANGES to NPT ADAPTORS



Catalogue PN	Size	A	B
AD-KFNPTF-10x012	NW10 1/8"NPT	30.00	19.10
AD-KFNPTF-10x025	NW10 1/4"NPT	30.00	19.10
AD-KFNPTF-16x012	NW16 1/8"NPT	30.00	19.10
AD-KFNPTF-16x025	NW16 1/4"NPT	30.00	19.10
AD-KFNPTF-25x012	NW25 1/8"NPT	40.00	19.10
AD-KFNPTF-25x025	NW25 1/4"NPT	40.00	19.10
AD-KFNPTF-25x050	NW25 1/2"NPT	40.00	25.40
AD-KFNPTF-25x038	NW25 3/8"NPT	40.00	19.10
AD-KFNPTF-40x012	NW40 1/8"NPT	55.00	25.40
AD-KFNPTF-40x025	NW40 1/4"NPT	55.00	25.40
AD-KFNPTF-40x050	NW40 1/2"NPT	55.00	25.40
AD-KFNPTF-40x075	NW40 3/4"NPT	55.00	25.40
AD-KFNPTF-50x012	NW50 1/8"NPT	75.00	25.40
AD-KFNPTF-50x025	NW50 1/4"NPT	75.00	25.40
AD-KFNPTF-50x050	NW50 1/2"NPT	75.00	25.40
AD-KFNPTF-50x075	NW50 3/4"NPT	75.00	25.40

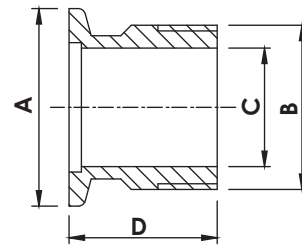
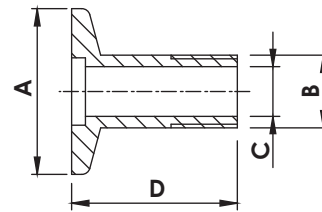


# ADAPTORS



## BSPT ADAPTORS

Catalogue PN	Size	A	B	C	D	BSPT
AD-KFBSPT-10x025	DN10-1/4"	30.00	13.16	9.00	30.00	1/4"x19BSPT
AD-KFBSPT-10x038	DN10-3/8"	30.00	16.66	10.00	30.00	3/8"x19BSPT
AD-KFBSPT-16x050	DN16-1/2"	30.00	20.96	16.00	30.00	1/2"x14BSPT
AD-KFBSPT-25x038	DN25-3/8"	40.00	16.66	10.00	30.00	3/8"x19BSPT
AD-KFBSPT-25x075	DN25-3/4"	40.00	26.44	20.00	30.00	3/4"x14BSPT
AD-KFBSPT-25x100	DN25-1.0"	40.00	33.25	24.00	30.00	1.0"x11BSPT
AD-KFBSPT-40x125	DN40-1.25"	55.00	41.91	35.00	30.00	1.25"x11BSPT
AD-KFBSPT-40x150	DN40-1.5"	55.00	47.80	41.00	30.00	1.5"x11BSPT
AD-KFBSPT-50x200	DN50-2.0"	75.00	59.61	51.00	30.00	2.0"x11BSPT



## BSP ADAPTORS

KF25-1.0" & KF40-1.5"

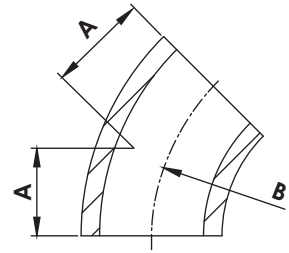
Catalogue PN	Size	A	B	C	D	BSPT
AD-KFBSP-10x025	DN10-1/4"	30.00	13.16	9.00	30.00	1/4"x19BSP
AD-KFBSP-10x038	DN10-3/8"	30.00	16.66	10.00	30.00	3/8"x19BSP
AD-KFBSP-16x025	DN16-1/4"	30.00	13.16	9.00	30.00	1/4"x19BSP
AD-KFBSP-16x050	DN16-1/2"	30.00	20.96	16.00	30.00	1/2"x14BSP
AD-KFBSP-25x050	DN25-1/2"	40.00	20.96	16.00	30.00	1/2"x14BSP
AD-KFBSP-25x075	DN25-3/4"	40.00	26.44	20.00	30.00	3/4"x14BSP
AD-KFBSP-25x100	DN25-1.0"	40.00	33.25	24.00	30.00	1.0"x11BSP
AD-KFBSP-40x025	DN40-1/4"	55.00	13.16	9.00	30.00	1/4"x19BSP
AD-KFBSP-40x050	DN40-1/2"	55.00	20.96	16.00	30.00	1/2"x14BSP
AD-KFBSP-40x125	DN40-1 1/4"	55.00	41.91	35.00	30.00	1.25"x11BSP
AD-KFBSP-40x150	DN40-1 1/2"	55.00	47.80	41.00	30.00	1.5"x11BSP
AD-KFBSP-50x200	DN50-2.0"	75.00	59.61	51.00	35.00	2.0"x11BSP

# WELD FITTINGS

## WELD 45° ELBOWS



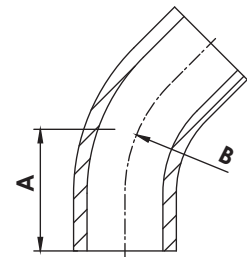
Catalogue PN	Size	Wall Thickness	A	B
BW-45EL-050	1/2"	1.65	7.95	19.10
BW-45EL-075	3/4"	1.65	11.91	28.60
BW-45EL-100	1.0"	1.65	15.77	38.10
BW-45EL-150	1.5"	1.65	23.67	57.15
BW-45EL-200	2.0"	1.65	31.57	76.20
BW-45EL-250	2.5"	1.65	39.70	95.25
BW-45EL-300	3.0"	1.65	47.35	114.30
BW-45EL-400	4.0"	2.11	63.12	152.40



## WELD 45° ELBOWS with TANGENTS



Catalogue PN	Size	Wall Thickness	A	B
BW-45ELT-075	3/4"	1.65	19.40	28.60
BW-45ELT-100	1.0"	1.65	30.18	38.10
BW-45ELT-150	1.5"	1.65	41.28	57.15
BW-45ELT-200	2.0"	1.65	58.72	76.20
BW-45ELT-250	2.5"	1.65	76.20	95.25
BW-45ELT-300	3.0"	1.65	93.70	114.30
BW-45ELT-400	4.0"	2.11	122.20	152.40

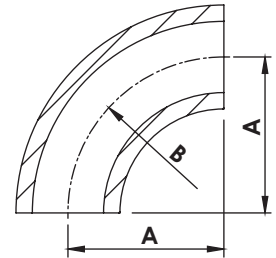


# WELD FITTINGS

## WELD 90° ELBOWS



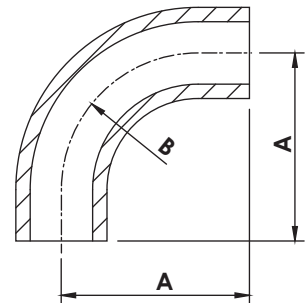
Catalogue PN	Size	Wall Thickness	A	B
BW-90EL-050	1/2"	1.65	19.10	19.10
BW-90EL-075	3/4"	1.65	28.60	28.60
BW-90EL-100	1.0"	1.65	38.10	38.10
BW-90EL-150	1.5"	1.65	57.15	57.15
BW-90EL-200	2.0"	1.65	76.20	76.20
BW-90EL-250	2.5"	1.65	95.25	95.25
BW-90EL-300	3.0"	1.65	114.30	114.30
BW-90EL-400	4.0"	2.11	152.40	152.40



## WELD 90° ELBOWS with TANGENTS



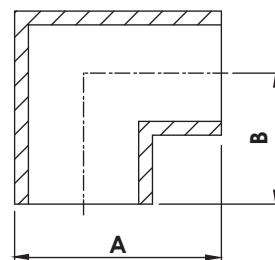
Catalogue PN	Size	Wall Thickness	A	B
BW-90ELT-075	3/4"	0.89	36.07	25.40
BW-90ELT-075-L	3/4"	1.65	64.78	28.60
BW-90ELT-100	1.0"	1.65	46.23	38.10
BW-90ELT-100L	1.0"	1.65	52.40	38.10
BW-90ELT-150	1.5"	1.65	61.21	57.15
BW-90ELT-150L	1.5"	1.65	74.60	57.15
BW-90ELT-200	2.0"	1.65	103.12	76.20
BW-90ELT-250	2.5"	1.65	131.83	95.25
BW-90ELT-300	3.0"	1.65	160.30	114.30
BW-90ELT-400	4.0"	2.11	211.07	152.40



**BW**

# WELD FITTINGS

## WELD 90° MITERED ELBOWS



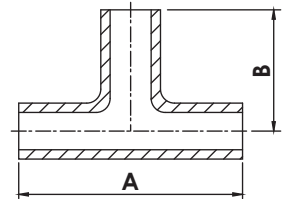
Catalogue PN	Size	Wall Thickness	A	B
BW-MEL-075	3/4"	1.65	34.93	25.40
BW-MEL-075L1	3/4"	1.65	45.08	35.56
BW-MEL-075L2	3/4"	1.65	45.63	36.10
BW-MEL-100	1.0"	1.65	60.20	47.50
BW-MEL-100L1	1.0"	1.65	60.45	47.75
BW-MEL-100L2	1.0"	1.65	58.90	46.20
BW-MEL-150	1.5"	1.65	76.20	57.15
BW-MEL-150L	1.5"	1.65	80.26	61.21
BW-MEL-200	2.0"	1.65	91.44	66.04
BW-MEL-200L1	2.0"	1.65	101.30	75.90
BW-MEL-200L2	2.0"	1.65	102.10	76.70
BW-MEL-200L3	2.0"	1.65	101.60	76.20
BW-MEL-250	2.5"	1.65	107.95	76.20
BW-MEL-250L1	2.5"	1.65	127.00	95.25
BW-MEL-250L2	2.5"	1.65	108.05	76.30
BW-MEL-300	3.0"	1.65	120.65	82.55
BW-MEL-300L	3.0"	1.65	113.50	75.40
BW-MEL-400	4.0"	2.11	149.35	98.55
BW-MEL-400L	4.0"	2.11	174.50	123.70
BW-MEL-600	6.0"	2.11	230.12	153.92

# WELD FITTINGS

## WELD EQUAL TEES



Catalogue PN	Tube OD	Wall Thickness	A	B
BW-ET-050	1/2"	1.65	38.10	19.05
BW-ET-075	3/4"	1.65	50.80	25.40
BW-ET-075L1	3/4"	1.65	72.40	36.20
BW-ET-075L2	3/4"	1.65	95.20	47.60
BW-ET-100	1.0"	1.65	91.40	45.70
BW-ET-100L	1.0"	1.65	95.20	47.60
BW-ET-150	1.5"	1.65	114.40	57.20
BW-ET-150L	1.5"	1.65	122.42	61.21
BW-ET-200	2.0"	1.65	132.58	66.29
BW-ET-200L	2.0"	1.65	152.40	76.20
BW-ET-250	2.5"	1.65	152.40	76.20
BW-ET-250L1	2.5"	1.65	163.40	81.70
BW-ET-250L2	2.5"	1.65	190.24	95.12
BW-ET-300	3.0"	1.65	165.20	82.60
BW-ET-300L	3.0"	1.65	183.40	91.70
BW-ET-400	4.0"	2.11	196.80	98.40
BW-ET-400L1	4.0"	2.11	203.40	101.70
BW-ET-400L2	4.0"	2.11	247.56	123.78
BW-ET-600	6.0"	2.77	254.00	127.00
BW-ET-600L	6.0"	2.11	307.80	153.90

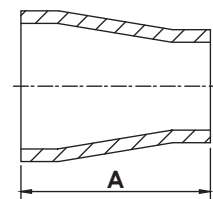


**BW**

## WELD CONICAL REDUCERS



Catalogue PN	Tube OD	Wall Thickness	A
BW-CRN-100x050	1.0"x 1/2"	1.65 x 1.65	34.90
BW-CRN-100x075	1.0"x 3/4"	1.65 x 1.65	34.90
BW-CRN-150x050	1.5"x 1/2"	1.65 x 1.65	60.30
BW-CRN-150x075	1.5"x 3/4"	1.65 x 1.65	60.30
BW-CRN-150x100	1.5"x 1.0"	1.65 x 1.65	60.30
BW-CRN-200x100	2.0"x 1.0"	1.65 x 1.65	60.30
BW-CRN-200x150	2.0"x 1.5"	1.65 x 1.65	60.30
BW-CRN-250x150	2.5"x 1.5"	1.65 x 1.65	60.30
BW-CRN-250x200	2.5"x 2.0"	1.65 x 1.65	60.30
BW-CRN-300x150	3.0"x 1.5"	1.65 x 1.65	92.10
BW-CRN-300x200	3.0"x 2.0"	1.65 x 1.65	92.10
BW-CRN-300x250	3.0"x 2.5"	1.65 x 1.65	92.10
BW-CRN-400x150	4.0"x 1.5"	2.11 x 1.65	92.10
BW-CRN-400x200	4.0"x 2.0"	2.11 x 1.65	92.10
BW-CRN-400x250	4.0"x 2.5"	2.11 x 1.65	92.10
BW-CRN-400x300	4.0"x 3.0"	2.11 x 1.65	92.10



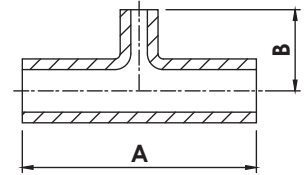


# WELD FITTINGS

## WELD REDUCING TEES



Catalogue PN	Tube OD	Wall Thickness	A	B
BW-RT-100x050	1.0" x 1/2"	1.65 x 1.65	95.50	25.40
BW-RT-100x075	1.0" x 3/4"	1.65 x 1.65	95.50	28.45
BW-RT-150x050	1.5" x 1/2"	1.65 x 1.65	114.30	31.75
BW-RT-150x075	1.5" x 3/4"	1.65 x 1.65	114.30	35.05
BW-RT-150x075L	1.5" x 3/4"	1.65 x 0.89	114.30	35.05
BW-RT-150x100	1.5" x 1.0"	1.65 x 1.65	114.30	54.10
BW-RT-200x050	2.0" x 1/2"	1.65 x 1.65	152.40	38.10
BW-RT-200x075	2.0" x 3/4"	1.65 x 1.65	152.40	41.40
BW-RT-200x100	2.0" x 1.0"	1.65 x 1.65	152.40	60.30
BW-RT-200x150	2.0" x 1.5"	1.65 x 1.65	152.40	63.50
BW-RT-250x150	2.5" x 1.5"	1.65 x 1.65	152.40	69.85
BW-RT-250x200	2.5" x 2.0"	1.65 x 1.65	152.40	82.55
BW-RT-300x150	3.0" x 1.5"	1.65 x 1.65	165.10	76.20
BW-RT-300x200	3.0" x 2.0"	1.65 x 1.65	165.10	88.90
BW-RT-300x250	3.0" x 2.5"	1.65 x 1.65	165.10	82.55
BW-RT-400x150	4.0" x 1.5"	2.11 x 1.65	197.10	88.90
BW-RT-400x200	4.0" x 2.0"	2.11 x 1.65	197.10	101.60
BW-RT-400x250	4.0" x 2.5"	2.11 x 1.65	197.10	95.25
BW-RT-400x300	4.0" x 3.0"	2.11 x 1.65	197.10	95.25
BW-RT-600x150	6.0" x 1.5"	2.11 x 1.65	254.00	114.30
BW-RT-600x200	6.0" x 2.0"	2.11 x 1.65	254.00	127.00
BW-RT-600x250	6.0" x 2.5"	2.11 x 1.65	254.00	120.65
BW-RT-600x300	6.0" x 3.0"	2.11 x 1.65	254.00	120.65
BW-RT-600x400	6.0" x 4.0"	2.11 x 2.11	254.00	123.95



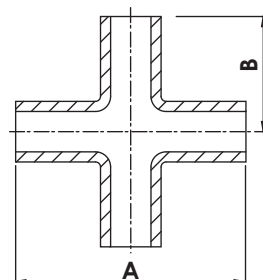
# WELD FITTINGS

## 焊式同径四通

### WELD 4-WAY EQUAL CROSSES

材质：不锈钢304/L

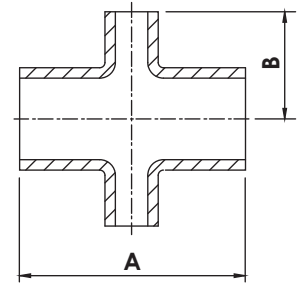
管表面处理：振动研磨



Catalogue PN	Tube OD	Wall Thickness	A	B
BW-4C-050	1/2"	1.65	38.10	19.05
BW-4C-075	3/4"	1.65	50.80	25.40
BW-4C-075L1	3/4"	1.65	71.20	35.60
BW-4C-075L2	3/4"	1.65	95.20	47.60
BW-4C-100	1.0"	1.65	95.20	47.60
BW-4C-100L	1.0"	1.65	91.40	45.70
BW-4C-150	1.5"	1.65	114.40	57.20
BW-4C-150L	1.5"	1.65	121.42	60.71
BW-4C-200	2.0"	1.65	152.40	76.20
BW-4C-200L	2.0"	1.65	131.60	65.80
BW-4C-250	2.5"	1.65	152.40	76.20
BW-4C-250L	2.5"	1.65	190.50	95.25
BW-4C-300	3.0"	1.65	160.28	80.14
BW-4C-300L	3.0"	1.65	165.20	82.60
BW-4C-400	4.0"	2.11	196.80	98.40
BW-4C-400L	4.0"	2.11	247.40	123.70
BW-4C-600	6.0"	2.77	254.00	127.00
BW-4C-600L	6.0"	2.77	307.80	153.90

**BW**

# WELD FITTINGS



## WELD 4-WAY REDUCING CROSSES

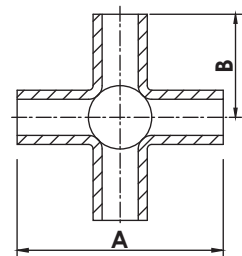
Catalogue PN	Tube OD	Wall Thickness	A	B
BW-4RC-100x050	1.0"x1/2"	1.65x1.65	95.50	25.40
BW-4RC-100x075	1.0"x3/4"	1.65x1.65	95.50	28.45
BW-4RC-150x050	1.5"x1/2"	1.65x1.65	114.30	31.75
BW-4RC-150x075	1.5"x3/4"	1.65x1.65	114.30	35.05
BW-4RC-150x100	1.5"x1.0"	1.65x1.65	114.30	54.10
BW-4RC-200x050	2.0"x1/2"	1.65x1.65	152.40	38.10
BW-4RC-200x075	2.0"x3/4"	1.65x1.65	152.40	41.40
BW-4RC-200x100	2.0"x1.0"	1.65x1.65	152.40	60.45
BW-4RC-200x150	2.0"x1.5"	1.65x1.65	152.40	63.50
BW-4RC-250x150	2.5"x1.5"	1.65x1.65	152.40	69.85
BW-4RC-250x200	2.5"x2.0"	1.65x1.65	152.40	82.55
BW-4RC-300x150	3.0"x1.5"	1.65x1.65	165.10	76.20
BW-4RC-300x200	3.0"x2.0"	1.65x1.65	165.10	88.90
BW-4RC-300x250	3.0"x2.5"	1.65x1.65	165.10	82.55
BW-4RC-400x150	4.0"x1.5"	2.11x1.65	197.10	88.90
BW-4RC-400x200	4.0"x2.0"	2.11x1.65	197.10	101.60
BW-4RC-400x250	4.0"x2.5"	2.11x1.65	197.10	95.25
BW-4RC-400x300	4.0"x3.0"	2.11x1.65	197.10	95.25
BW-4RC-600x150	6.0"x1.5"	2.11x1.65	254.00	114.30
BW-4RC-600x200	6.0"x2.0"	2.11x1.65	254.00	127.00
BW-4RC-600x250	6.0"x2.5"	2.11x1.65	254.00	120.65
BW-4RC-600x300	6.0"x3.0"	2.11x1.65	254.00	120.65
BW-4RC-600x400	6.0"x4.0"	2.11x2.11	254.00	123.95

# WELD FITTINGS



## WELD 5-WAY CROSSES

Catalogue PN	Tube OD	Wall Thickness	A	B
BW-5C-075	3/4"	1.65	50.80	25.40
BW-5C-075L	3/4"-L	1.65	67.30	33.65
BW-5C-100	1.0"	1.65	95.40	47.70
BW-5C-100L	1.0"-L	1.65	91.40	45.70
BW-5C-150	1.5"	1.65	114.40	57.20
BW-5C-200	2.0"	1.65	152.40	76.20
BW-5C-250	2.5"	1.65	152.40	76.20
BW-5C-250L	2.5"-L	1.65	190.26	95.13
BW-5C-300	3.0"	1.65	165.20	82.60
BW-5C-400	4.0"	2.11	197.20	98.60
BW-5C-400L	4.0"-L	2.11	247.40	123.70
BW-5C-600	6.0"	2.77	254.00	127.00
BW-5C-600L	6.0"-L	2.77	307.80	153.90

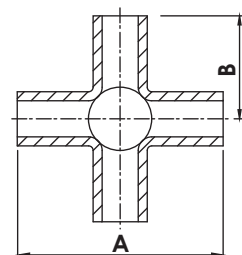


**BW**

## WELD 6-WAY CROSSES



Catalogue PN	Tube OD	Wall Thickness	A	B
BW-6C-075	3/4"	1.65	50.80	25.40
BW-6C-075L	3/4"-L	1.65	67.30	33.65
BW-6C-100	1.0"	1.65	95.40	47.70
BW-6C-150	1.5"	1.65	114.40	57.20
BW-6C-200	2.0"	1.65	152.40	76.20
BW-6C-250	2.5"	1.65	152.40	76.20
BW-6C-250L	2.5"-L	1.65	190.26	95.13
BW-6C-300	3.0"	1.65	165.20	82.60
BW-6C-400	4.0"	2.11	197.20	98.60
BW-6C-400L	4.0"-L	2.11	247.40	123.70
BW-6C-600	6.0"	2.77	254.00	127.00
BW-6C-600L	6.0"-L	2.77	307.80	153.90

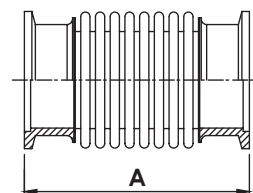


# BELLOWS, FLEXIBLE HOSES & TRAPS

## KF BELLOWS



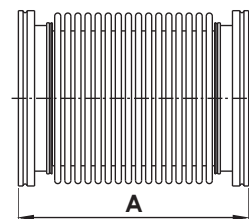
Catalogue PN	Size	Bellow Wall Thickness	A Free Length
MB-KF-16-100L	KF16-100L	0.15mmt	100.00
MB-KF-16-250L	KF16-250L	0.15mmt	250.00
MB-KF-16-500L	KF16-500L	0.15mmt	500.00
MB-KF-16-750L	KF16-750L	0.15mmt	750.00
MB-KF-16-1000L	KF16-1000L	0.15mmt	1,000.00
MB-KF-25-100L	KF25-100L	0.15mmt	100.00
MB-KF-25-250L	KF25-250L	0.15mmt	250.00
MB-KF-25-500L	KF25-500L	0.15mmt	500.00
MB-KF-25-750L	KF25-750L	0.15mmt	750.00
MB-KF-25-1000L	KF25-1000L	0.15mmt	1,000.00
MB-KF-40-100L	KF40-100L	0.15mmt	100.00
MB-KF-40-250L	KF40-250L	0.15mmt	250.00
MB-KF-40-500L	KF40-500L	0.15mmt	500.00
MB-KF-40-750L	KF40-750L	0.15mmt	750.00
MB-KF-40-1000L	KF40-1000L	0.15mmt	1,000.00
MB-KF-50-100L	KF50-100L	0.15mmt	100.00
MB-KF-50-250L	KF50-250L	0.15mmt	250.00
MB-KF-50-500L	KF50-500L	0.15mmt	500.00
MB-KF-50-750L	KF50-750L	0.15mmt	750.00
MB-KF-50-1000L	KF50-1000L	0.15mmt	1,000.00



## ISO-K BELLOWS



Catalogue PN	Size	Bellow Wall Thickness	A Free Length
MB-ISOK-63-100L	ISO63-100L	0.20mmt	100.00
MB-ISOK-63-250L	ISO63-250L	0.20mmt	250.00
MB-ISOK-63-500L	ISO63-500L	0.20mmt	500.00
MB-ISOK-63-750L	ISO63-750L	0.20mmt	750.00
MB-ISOK-63-1000L	ISO63-1000L	0.20mmt	1,000.00
MB-ISOK-80-100L	ISO80-100L	0.20mmt	100.00
MB-ISOK-80-250L	ISO80-250L	0.20mmt	250.00
MB-ISOK-80-500L	ISO80-500L	0.20mmt	500.00
MB-ISOK-80-750L	ISO80-750L	0.20mmt	750.00
MB-ISOK-80-1000L	ISO80-1000L	0.20mmt	1,000.00
MB-ISOK-100-100L	ISO100-100L	0.20mmt	100.00
MB-ISOK-100-250L	ISO100-250L	0.20mmt	250.00
MB-ISOK-100-500L	ISO100-500L	0.20mmt	500.00
MB-ISOK-100-750L	ISO100-750L	0.20mmt	750.00
MB-ISOK-100-1000L	ISO100-1000L	0.20mmt	1,000.00
MB-ISOK-160-100L	ISO160-100L	0.20mmt	100.00
MB-ISOK-160-250L	ISO160-250L	0.20mmt	250.00
MB-ISOK-160-500L	ISO160-500L	0.20mmt	500.00
MB-ISOK-160-750L	ISO160-750L	0.20mmt	750.00
MB-ISOK-160-1000L	ISO160-1000L	0.20mmt	1,000.00



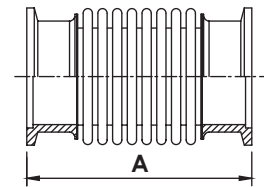
**MB  
MH**

# BELLOWS, FLEXIBLE HOSES & TRAPS

## KF FLEXIBLE HOSES



Catalogue PN	Size	Bellow Wall Thickness	A Free Length
MH-KF-16-250L	KF16-250L	0.15mmt	250.00
MH-KF-16-500L	KF16-500L	0.15mmt	500.00
MH-KF-16-1000L	KF16-1000L	0.15mmt	1,000.00
MH-KF-25-250L	KF25-250L	0.15mmt	250.00
MH-KF-25-500L	KF25-500L	0.15mmt	500.00
MH-KF-25-1000L	KF25-1000L	0.15mmt	1,000.00
MH-KF-40-250L	KF40-250L	0.15mmt	250.00
MH-KF-40-500L	KF40-500L	0.15mmt	500.00
MH-KF-40-1000L	KF40-1000L	0.15mmt	1,000.00
MH-KF-50-250L	KF50-250L	0.15mmt	250.00
MH-KF-50-500L	KF50-500L	0.15mmt	500.00
MH-KF-50-1000L	KF50-1000L	0.15mmt	1,000.00

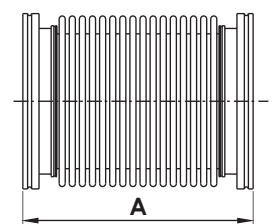


## ISO-K FLEXIBLE HOSES



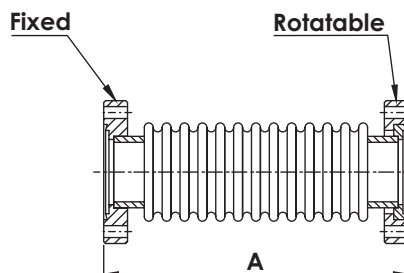
**MB  
MH**

Catalogue PN	Size	Bellow Wall Thickness	A Free Length
MH-ISOK-63-250L	ISO63-250L	0.20mmt	250.00
MH-ISOK-63-500L	ISO63-500L	0.20mmt	500.00
MH-ISOK-63-1000L	ISO63-1000L	0.20mmt	1,000.00
MH-ISOK-80-250L	ISO80-250L	0.20mmt	250.00
MH-ISOK-80-500L	ISO80-500L	0.20mmt	500.00
MH-ISOK-80-1000L	ISO80-1000L	0.20mmt	1,000.00
MH-ISOK-100-250L	ISO100-250L	0.20mmt	250.00
MH-ISOK-100-500L	ISO100-500L	0.20mmt	500.00
MH-ISOK-100-1000L	ISO100-1000L	0.20mmt	1,000.00
MH-ISOK-160-250L	ISO160-250L	0.20mmt	250.00
MH-ISOK-160-500L	ISO160-500L	0.20mmt	500.00
MH-ISOK-160-1000L	ISO160-1000L	0.20mmt	1,000.00



# BELLOWS, FLEXIBLE HOSES & TRAPS

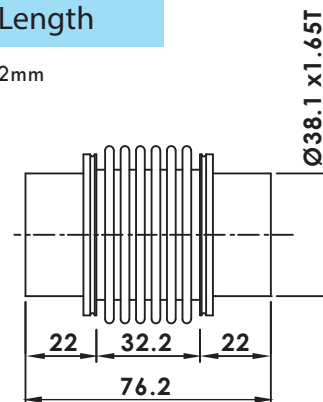
## CF BELLOWS



Catalogue PN	Size	Bellow Wall Thickness	A Free Length
MB-CF-133-082L	CF1.33-82L	0.15mmt	82.00
MB-CF-212-082L	CF2.12-82L	0.15mmt	82.00
MB-CF-275-082L	CF2.75-82L	0.15mmt	82.00
MB-CF-338-082L	CF3.38-82L	0.15mmt	82.00
MB-CF-450-178L	CF4.50-178L	0.20mmt	178.00
MB-CF-462-178L	CF4.62-178L	0.20mmt	178.00
MB-CF-600-178L	CF6.00-178L	0.20mmt	178.00
MB-CF-800-178L	CF8.00-178L	0.20mmt	178.00

## WELD FORMED BELLOWS

Catalogue PN	Size	Bellow Wall Thickness	A Free Length
A2511A04004000761K	KF40-76.2L	0.15mm	76.2mm



## WELD STUB FORMED BELLOWS

Catalogue PN	Size	Bellow Wall Thickness	A Free Length
A2511AZZ004000741K	KF40-73.2L	0.15mm	73.2mm

