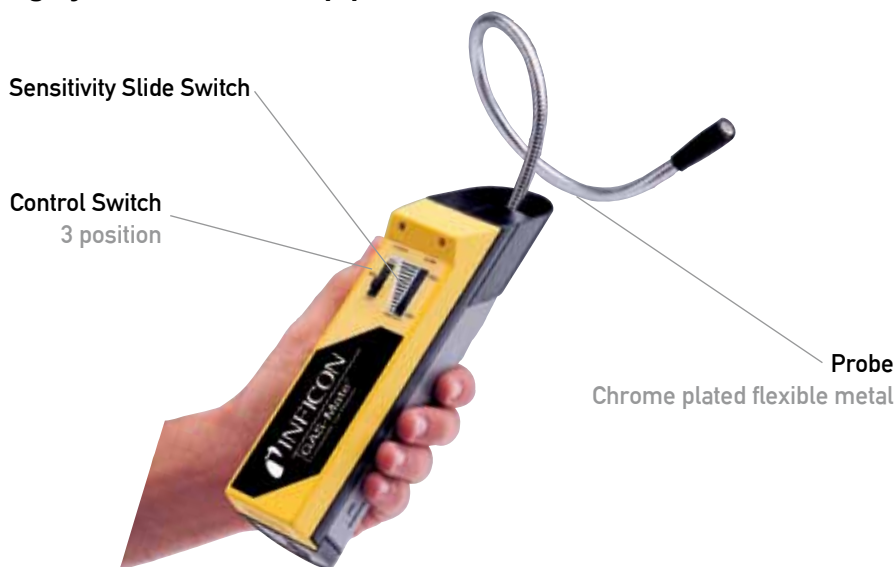


GAS-Mate

Combustible Gas Leak Detector



The GAS-Mate is a high quality and economical gas leak detector with high sensitivity. It is perfect for checking leaks in residential and commercial combustion appliances, such as natural gas or propane heating systems as well as pipelines.



GAS-Mate uses leading edge technology to detect hydrocarbons and other gases with twice the sensitivity of competing models. GAS-Mate is a precision instrument with rugged construction and a high impact casing, ideal for heavy duty handling. An extremely reliable unit, the manufacturer also offers a 2 year replacement warranty.

Features at a Glance

- Sensitive to 5ppm methane; which is twice the sensitivity of its nearest competitor
- Also detects natural gas, propane, butane, cyclopentane, ethane, ethanol, isobutane and ammonia
- Variable audio alarm and flashing LED to indicate leak strength
- Adjustable sensitivity helps pinpoint leaks fast
- Auto zeroing for ignoring background gas levels in leak test area
- Small sensor and probe tip allows leak detection in small places
- Runs continuously for 60 hours on 2 x 'D' alkaline batteries
- The base unit includes sensor, 2 x 'D' batteries and hard plastic carry case

TECHNICAL SPECIFICATIONS

Suggested Applications

Medium to heavy duty commercial applications

Sensitivity to Methane

5ppm

Leak Indicators

Variable flashing yellow LED and audible tick rate dependant on gas concentration

Power Source

2 x 'D' alkaline batteries

Battery Life

60 hours

Probe Type

Chrome plated flexible metal

Probe Length

43cm

Control Panel

3 position switch:
Off, High & Adjustable sensitivity

Slide Switch

Sensitivity

Operating Temperature Range

0°C to 45°C

Storage Temperature Range

-10°C to 60°C

Dimensions

224mm x 51mm x 76mm

Weight (with batteries)

700grams

Certification

CE UL913 Class 1, Division 1, Group A, B, C & D, Met Laboratories Listing #E112145

Manufacturer's warranty: 24 months